

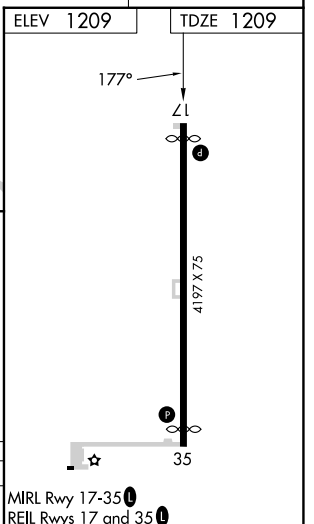
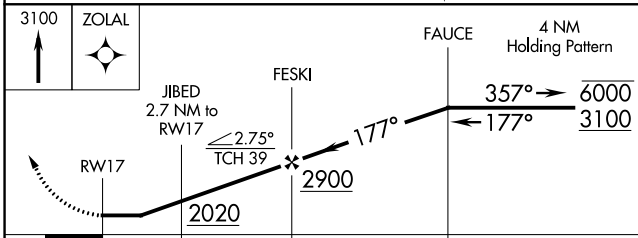
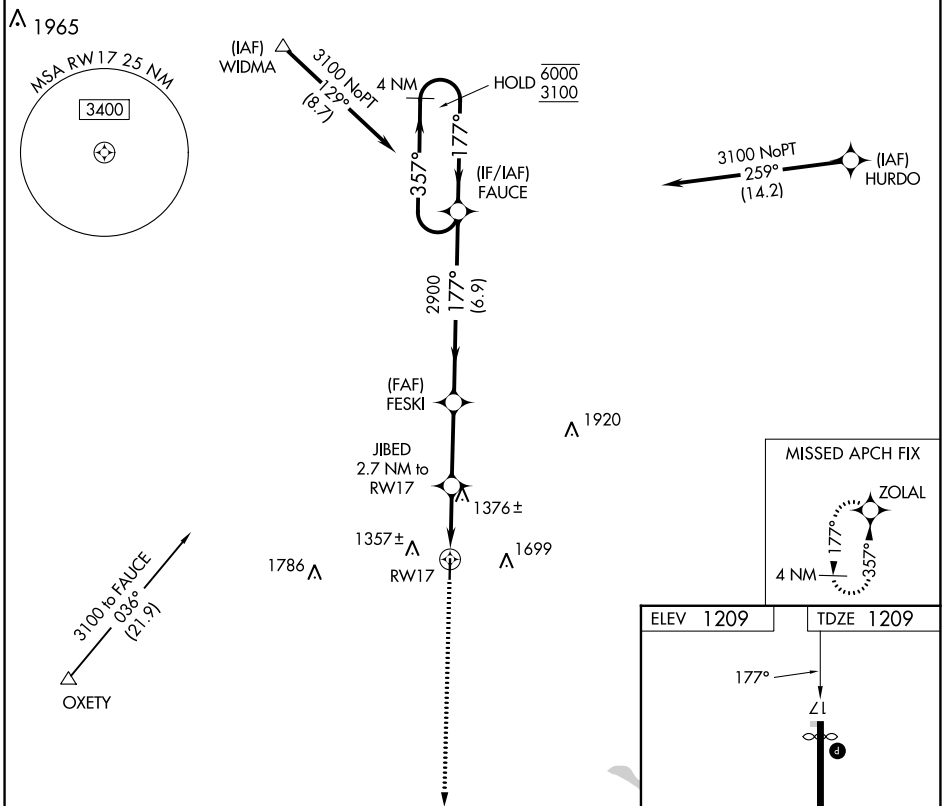
APP CRS <b>177°</b>	Rwy Idg <b>3995</b>
	TDZE <b>1209</b>
	Apt Elev <b>1209</b>

# RNAV (GPS) RWY 17

CLAY CENTER MUNI (CYW)

RNP APCH.		MISSED APPROACH: Climb to 3100 direct ZOLAL and hold.
<p><b>▼</b> Procedure NA at night. Rwy 17 helicopter visibility reduction below 1 SM NA.</p> <p><b>▲</b> NA When local altimeter setting not received, use Salina altimeter setting and increase all MDA 120 feet and LNAV Cat C visibility 3/8 SM.</p>		

AWOS-3T <b>119.95</b>	MARSHALL AAF APP CON * <b>121.25 254.35</b>	UNICOM <b>122.8 (CTAF) 0</b>
--------------------------	--	---------------------------------



CATEGORY	A	B	C	D
LNAV MDA	1640-1	431 (500-1)	1640-1 1/4 431 (500-1 1/4)	NA

MIRL Rwy 17-35 0  
REIL Rwy 17 and 35 0

NC-2, 11 JUL 2024 to 08 AUG 2024

NC-2, 11 JUL 2024 to 08 AUG 2024