

|  |                        |   |
|--|------------------------|---|
| WAAS<br>CH <b>97534</b><br><b>W35A</b> | APP CRS<br><b>354°</b> | Rwy Idg <b>5100</b><br>TDZE <b>1605</b><br>Apt Elev <b>1605</b> |
|--|------------------------|---|

# RNAV (GPS) RWY 35

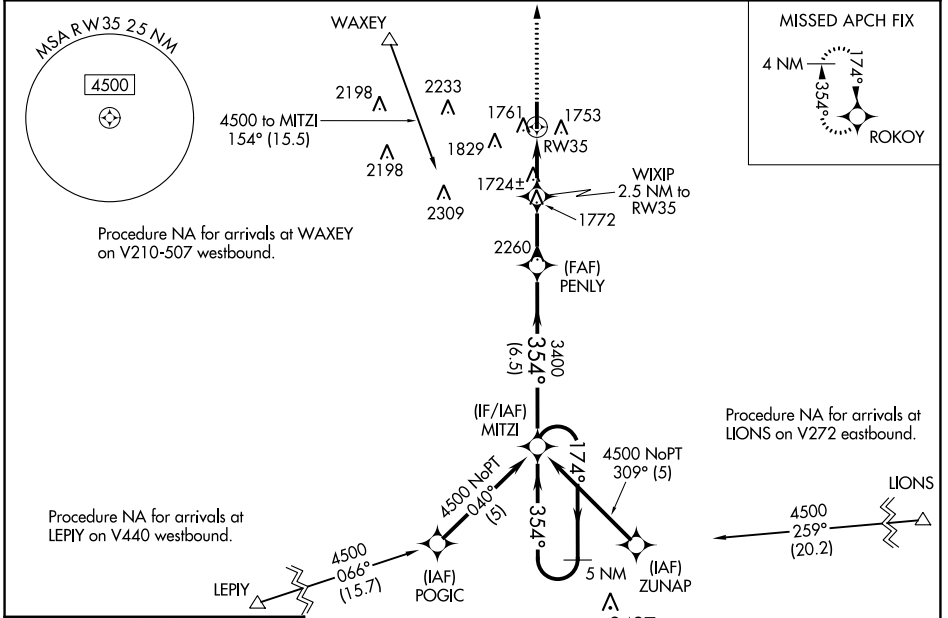
WEATHERFORD STAFFORD (OJA)

**RNP APCH.**

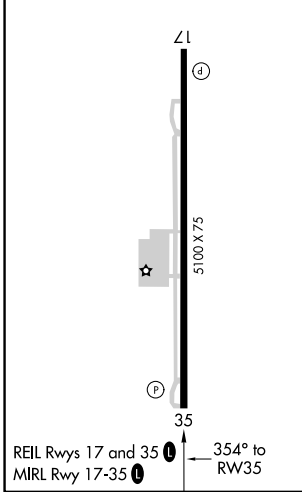
⚠ Straight-in Rwy 35 at night, Circling Rwy 17 at night, operational VGSI required, remain on or above VGSI glidepath until threshold. Rwy 17 helicopter visibility below 1 SM NA. When local altimeter setting not received, use Clinton Rgnl altimeter setting: increase all MDA 40 feet and visibility Cat C ¼ mile.

MISSED APPROACH: Climb to 4000 direct ROKOY and hold.

|                            |  |                                 |
|----------------------------|--|---------------------------------|
| AWOS-3PT<br><b>118.575</b> | FORT WORTH CENTER<br><b>128.4 269.37</b> | UNICOM<br><b>122.8 (CTAF) 0</b> |
|----------------------------|--|---------------------------------|



|           |           |
|-----------|-----------|
| ELEV 1605 | TDZE 1605 |
|-----------|-----------|



| CATEGORY                                     | A                     | B                     | C                             | D  |
|--|-----------------------|-----------------------|-------------------------------|----|
| LP MDA                                       | 1980-1 375 (400-1)    |                       |                               | NA |
| LNAV MDA                                     | 2020-1                | 415 (500-1)           | 2020-1 1/8<br>415 (500-1 1/8) | NA |
| <input checked="" type="checkbox"/> CIRCLING | 2080-1<br>475 (500-1) | 2140-1<br>535 (600-1) | 2380-2 1/4<br>775 (800-2 1/4) | NA |

SC-1, 11 JUL 2024 to 08 AUG 2024

SC-1, 11 JUL 2024 to 08 AUG 2024