

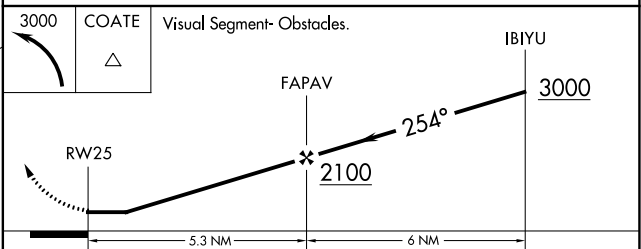
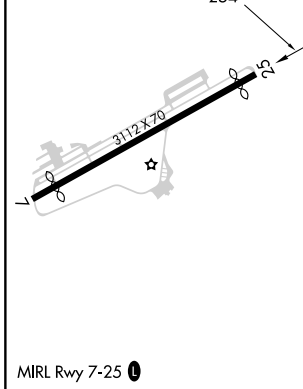
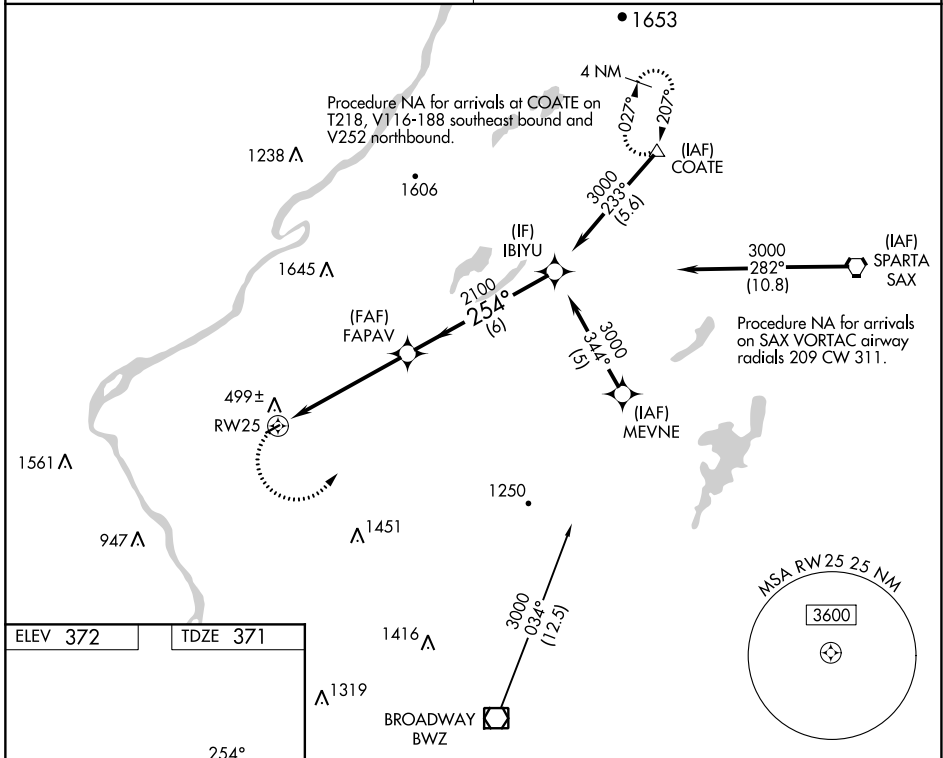
APP CRS 254°	Rwy Idg TDZE Apt Elev	2877 371 372
------------------------	-----------------------------	---

RNAV (GPS) RWY 25

BLAIRSTOWN (1N7)

RNP APCH.	Procedure NA at night. Obtain local altimeter setting on CTAF; when not received, use Lehigh Valley Intl altimeter setting. Rwy 25 helicopter visibility reduction below 1 SM NA.	MISSED APPROACH: Climbing left turn to 3000 direct COATE and hold.
Procedure NA Procedure NA		

NEW YORK APP CON 127.6 379.9	UNICOM 123.0 (CTAF) 0
--	---------------------------------



CATEGORY	A	B	C	D
LNAV MDA	1260-1¼	889 (900-1¼)	NA	
LEHIGH VALLEY INTL ALTIMETER SETTING MINIMUMS				
LNAV MDA	1540-1¼ 1169 (1200-1¼)	1540-1½ 1169 (1200-1½)	NA	

NE-2, 11 JUL 2024 to 08 AUG 2024

NE-2, 11 JUL 2024 to 08 AUG 2024