

WAAS CH <b>93806</b> <b>W31A</b>	APP CRS <b>307°</b>	Rwy Idg TDZE Apt Elev	<b>6350</b> <b>231</b> <b>231</b>
--	------------------------	-----------------------------	---

# RNAV (GPS) RWY 31

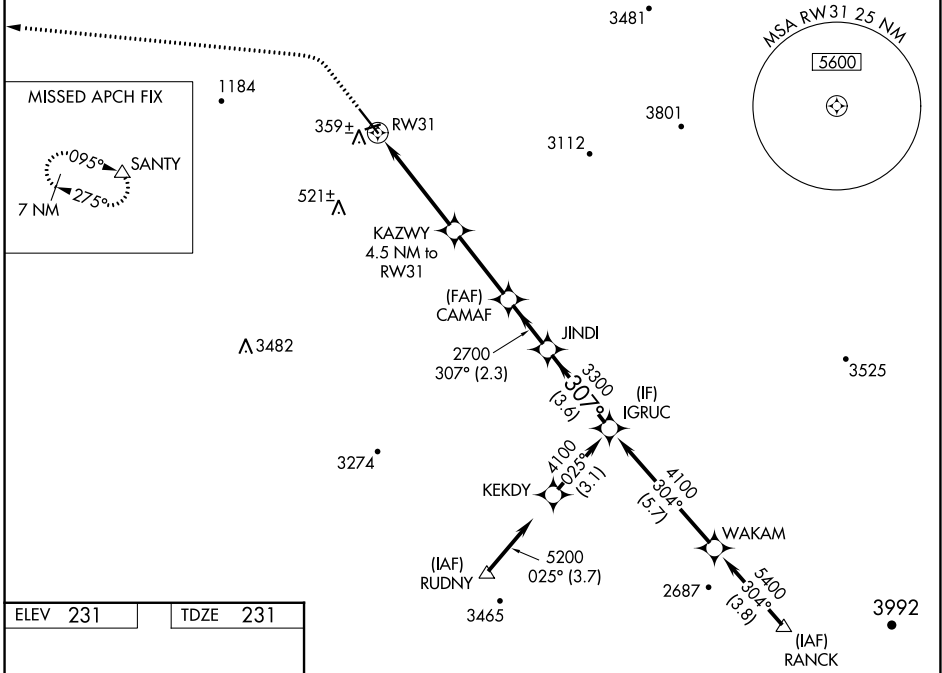
HOLLISTER MUNI (CVH)

RNP APCH.

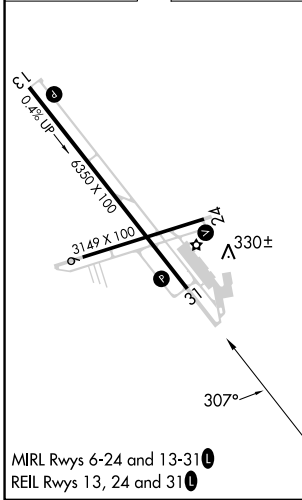
⚠ Circling to Rwy 6 NA at night. Rwy 31 helicopter visibility reduction below 3/4 SM NA.  
For uncompensated Baro-VNAV systems, LNAV/VNAV NA below -15°C or above 54°C.

MISSED APPROACH: Climb to 1200, then climbing left turn to 7000 direct SANY and hold, continue climb-in-hold to 7000.

AWOS-3 <b>120.425</b>	NORCAL APP CON <b>124.525 348.675</b>	UNICOM <b>123.0 (CTAF)</b>
--------------------------	--	-------------------------------



ELEV 231	TDZE 231
----------	----------



1200	7000	SANY	△
*LNAV only			
RW31	KAZWY *2.3 NM to RW31	CAMAF 4.5 NM to RW31	JINDI 2700
			IGRUC 4100
			GP 3.00° TCH 44
	2.3 NM	2.2 NM	3.1 NM
			2.3 NM
			3.6 NM
CATEGORY	A	B	C
LPV DA	494-7/8	263 (300-7/8)	NA
LNAV/VNAV DA	719-13/8	488 (500-13/8)	NA
LNAV MDA	1000-1 769 (800-1)	1000-1/4 769 (800-1/4)	1000-2 1/2 769 (800-2 1/2)
CIRCLING	1000-1 769 (800-1)	1000-1/4 769 (800-1/4)	1000-2 1/2 769 (800-2 1/2)

SW-2, 11 JUL 2024 to 08 AUG 2024

SW-2, 11 JUL 2024 to 08 AUG 2024