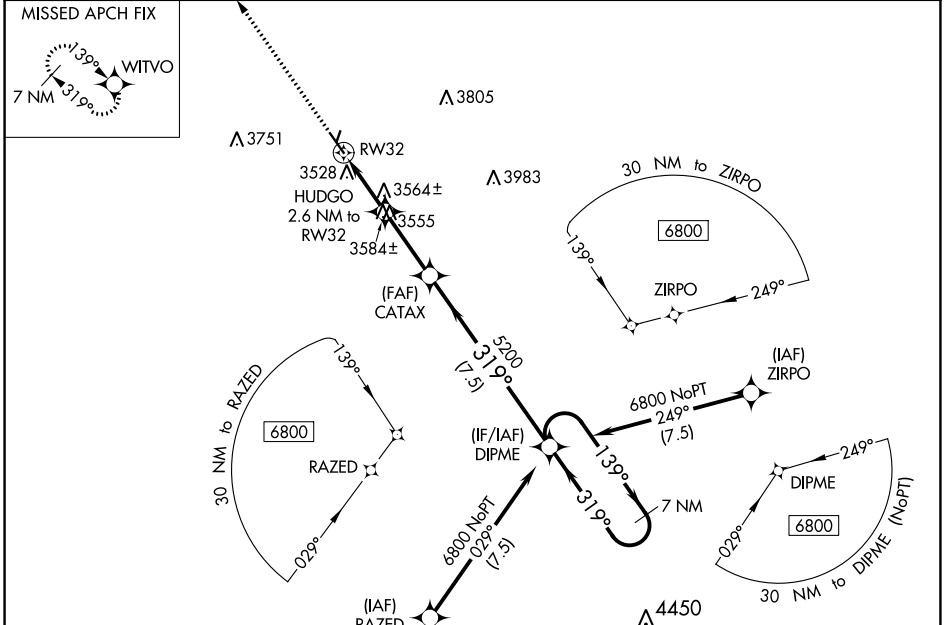


WAAS CH <b>45839</b> <b>W32A</b>	APP CRS <b>319°</b>	Rwy Idg TDZE Apt Elev	<b>5200</b> <b>3430</b> <b>3430</b>
--	------------------------	-----------------------------	---

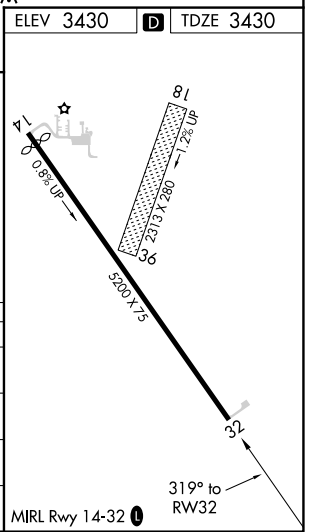
# RNAV (GPS) RWY 32

CHEYENNE COUNTY MUNI (SYF)

RNP APCH.	MISSED APPROACH: Climb to 6800 direct WITVO and hold, continue climb-in-hold to 6800.	
AWOS-3 <b>118.925</b>	DENVER CENTER <b>132.7 226.675</b>	UNICOM <b>122.8 (CTAF) 0</b>



6800 WITVO	HUDGO 2.6 NM to RW32	CATAX 5200	DIPME 7 NM Holding Pattern	6800
*LNAV only	*1.1 NM to RW32	5200	139°	GP 3.00° TCH 50
RW32	4300*	319°	319°	
1.1 NM	1.5 NM	2.8 NM	7.5 NM	
CATEGORY	A	B	C	D
LPV DA	3680-1	250 (300-1)		NA
LNAV/VNAV DA	3680-1	250 (300-1)		NA
LNAV MDA	3820-1	390 (400-1)	3820-1 <sup>1</sup> / <sub>8</sub> 390 (400-1 <sup>1</sup> / <sub>8</sub> )	NA
<b>C</b> CIRCLING	3840-1 410 (500-1)	3880-1 450 (500-1)	3900-1 <sup>1</sup> / <sub>2</sub> 470 (500-1 <sup>1</sup> / <sub>2</sub> )	NA



NC-2, 11 JUL 2024 to 08 AUG 2024

NC-2, 11 JUL 2024 to 08 AUG 2024