

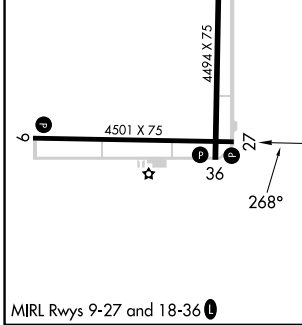
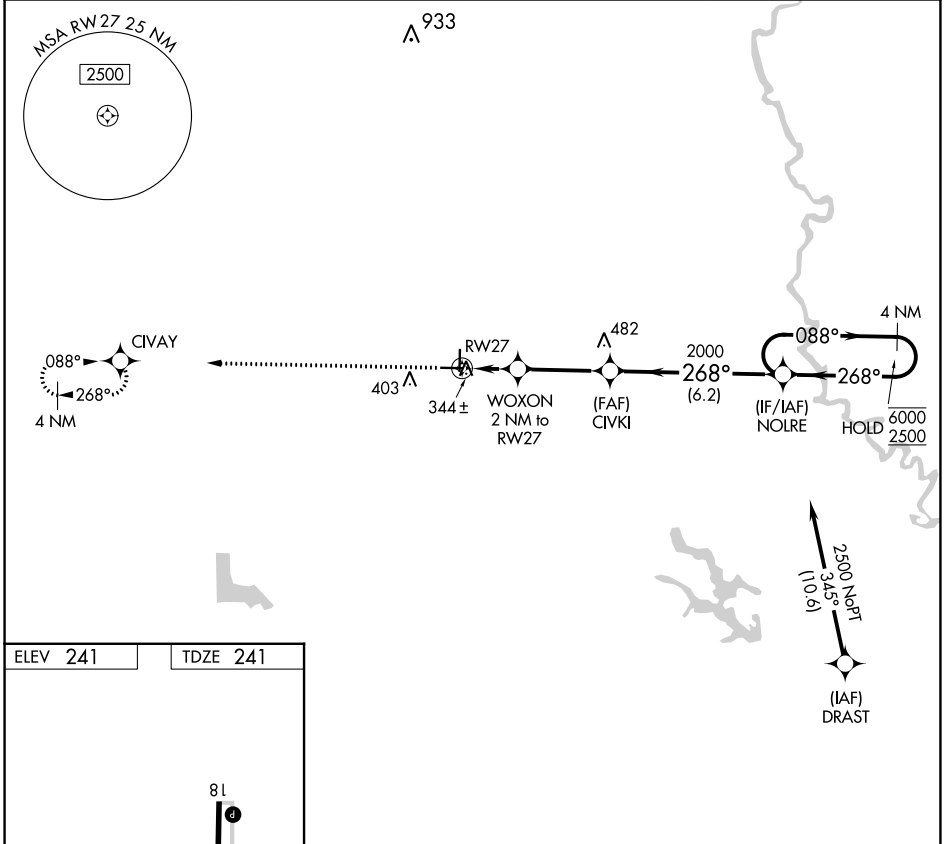
APP CRS	Rwy Idg	4501
268°	TDZE	241
	Apt Elev	241

RNAV (GPS) RWY 27

CARLISLE MUNI (4M3)

RNP APCH-GPS.	<p>MISSED APPROACH: Climb to 2500 direct CIVAY and hold.</p>
<p>▼ Procedure NA at night. Rwy 27 helicopter visibility reduction below 1 SM NA.</p> <p>▲ When local altimeter setting not received, use Stuttgart altimeter setting.</p>	

AWOS-2 119.275	LITTLE ROCK APP CON 135.4 353.6	CLNC DEL 135.4	UNICOM 122.8 (CTAF) 1
--------------------------	-------------------------------------------	--------------------------	---------------------------------



2500	CIVAY	NOLRE		4 NM Holding Pattern
↑	✧	WOXON 2 NM to RWY 27	CIVKI	2000
		920	268°	088° → 6000
		2 NM	3.3 NM	← 268° 2500
CATEGORY	A	B	C	D
LNAV MDA	640-1	399 (400-1)	NA	

SC-1, 11 JUL 2024 to 08 AUG 2024

SC-1, 11 JUL 2024 to 08 AUG 2024