

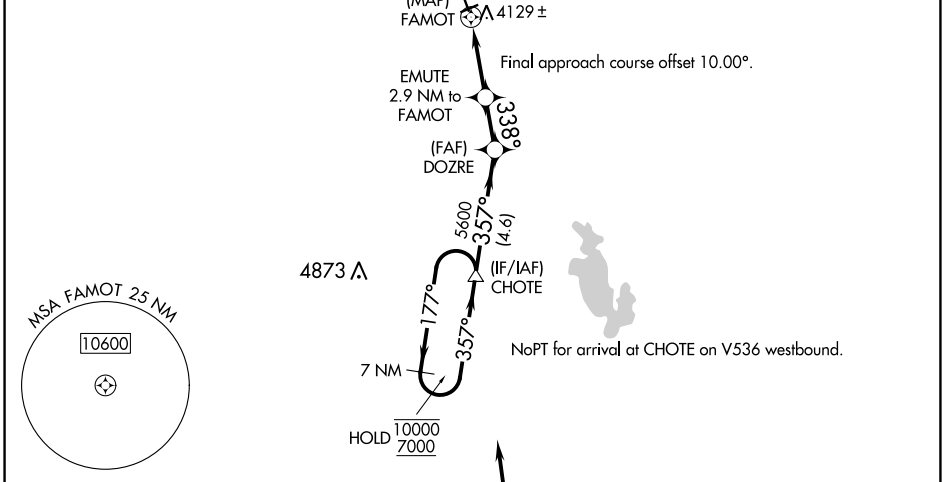
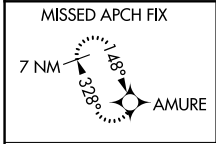
RNAV (GPS) RWY 33

CHOTEAU (CII)

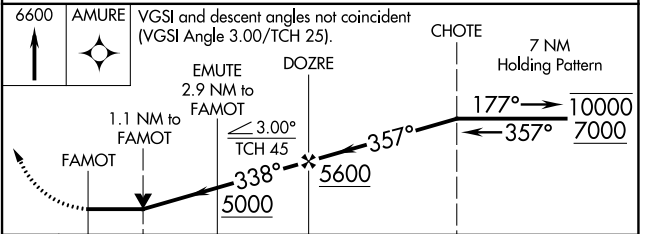
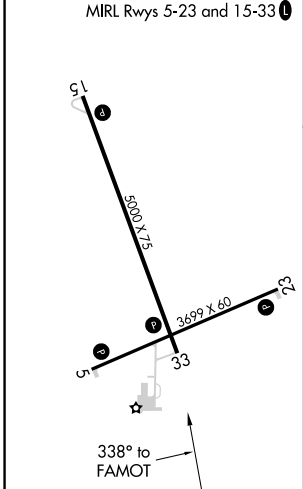
APP CRS 338°	Rwy ldg 5000
	TDZE 3943
	Apt Elev 3947

RNP APCH.	MISSED APPROACH: Climb to 6600 direct AMURE and hold.
NA Rwy 33 helicopter visibility reduction below 3/4 SM NA.	

AWOS-2 119.275	SALT LAKE CITY CENTER 133.4 285.4	UNICOM 122.8 (CTAF)
--------------------------	---	-------------------------------



ELEV 3947	TDZE 3943
-----------	-----------



CATEGORY	A	B	C	D
INAV MDA	4380-1	437 (500-1)	4380-1 1/4	437 (500-1 1/4)
C CIRCLING	4440-1	493 (500-1)	4600-1 3/4 653 (700-1 3/4)	4900-3 953 (1000-3)

NW-1, 11 JUL 2024 to 08 AUG 2024

NW-1, 11 JUL 2024 to 08 AUG 2024