

SWABR ONE DEPARTURE (RNAV)

CTAF
122.9
REGIONAL DEP CON
125.2 343.65

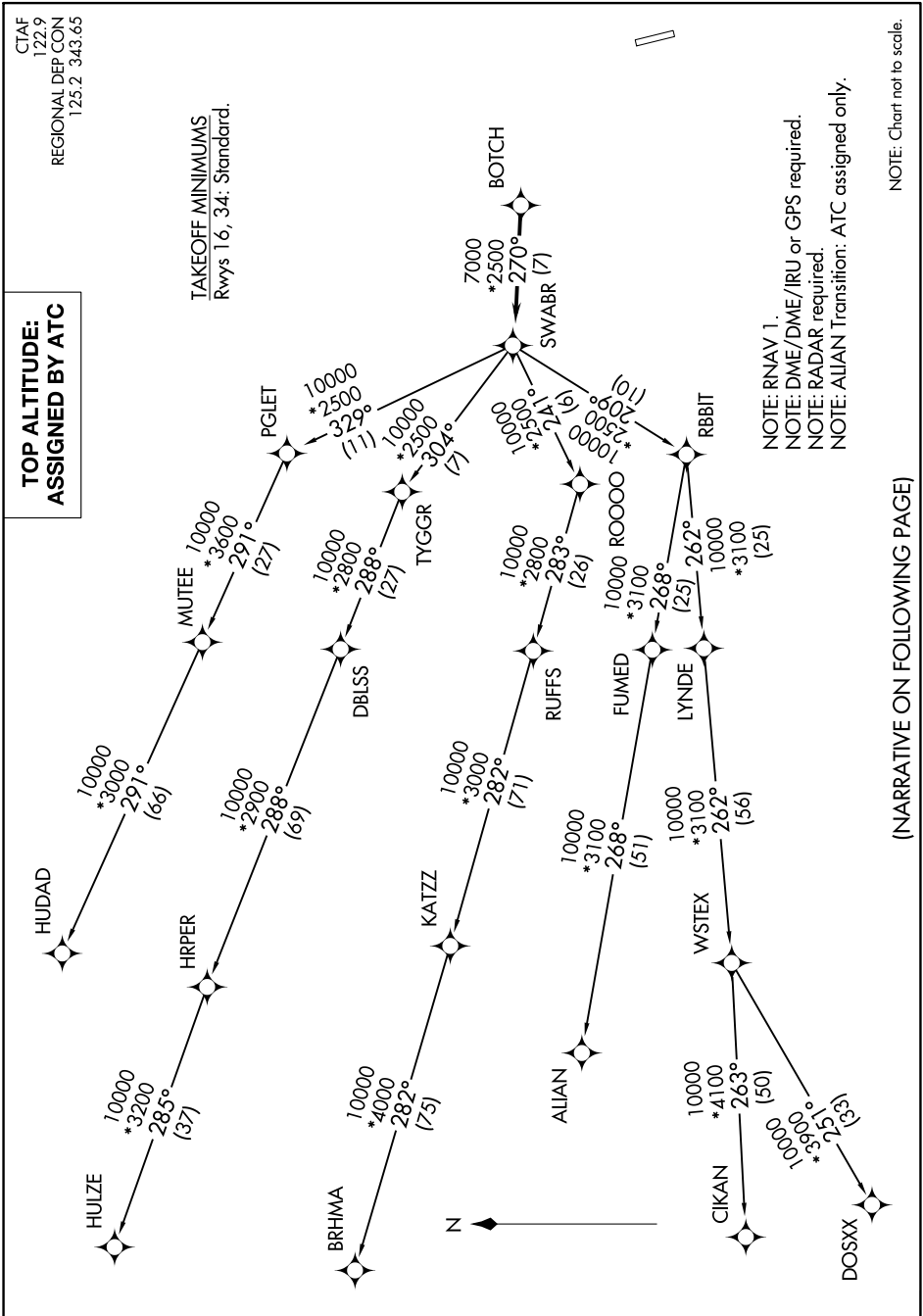
TOP ALTITUDE: ASSIGNED BY ATC

TAKEOFF MINIMUMS
Rwys 16, 34: Standard.

NOTE: RNAV 1.
NOTE: DME/DME/IRU or GPS required.
NOTE: RADAR required.
NOTE: ALIAN Transition: ATC assigned only.

NOTE: Chart not to scale.

SC-2, 11 JUL 2024 to 08 AUG 2024



(NARRATIVE ON FOLLOWING PAGE)

SC-2, 11 JUL 2024 to 08 AUG 2024

SWABR ONE DEPARTURE (RNAV)