

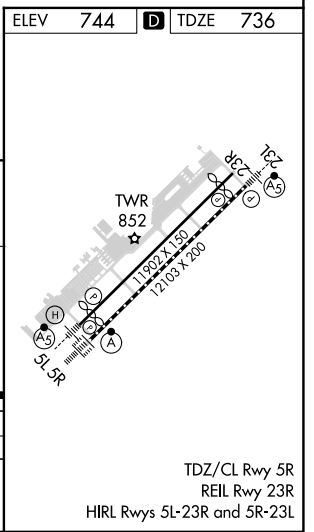
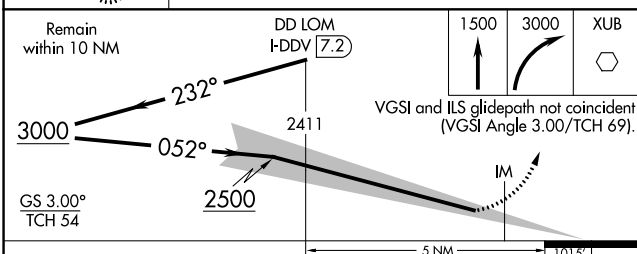
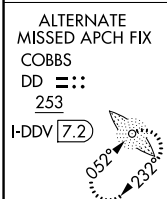
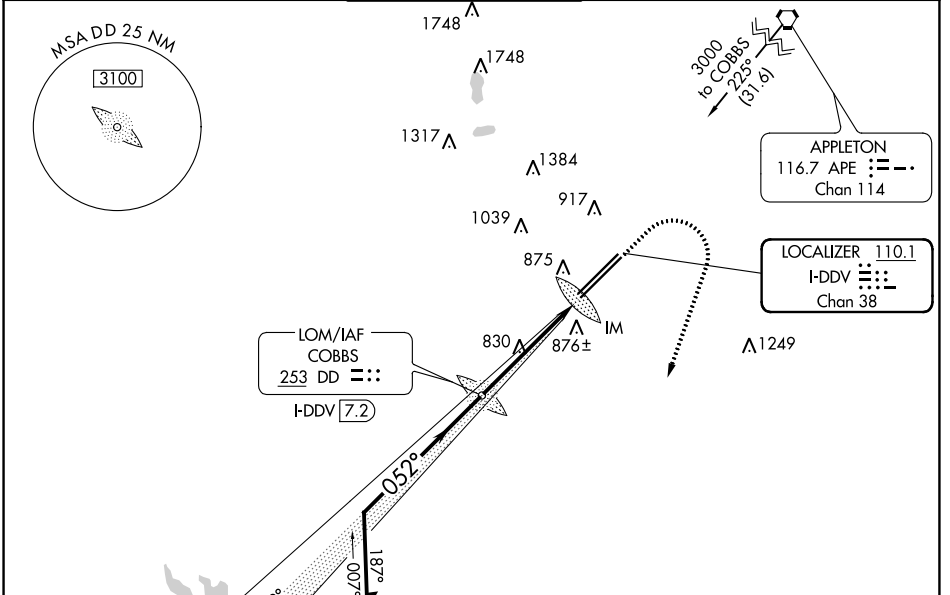
LOC/DME I-DDV 110.1 Chan 38	APP CRS 052°	Rwy Idg 12103 TDZE 736 Apt Elev 744
---	------------------------	--

ILS RWY 5R (SA CAT I)

RICKENBACKER INTL (LCK)

ADF or DME required.	ALSF-2	MISSED APPROACH: Climb to 1500 then climbing right turn to 3000 direct XUB VOR and hold.
NA Requires specific OPSPEC, MSPEC or LOA approval.		

ATIS 132.75	COLUMBUS APP CON 134.0 279.6	RICK TOWER 120.05 348.4	GND CON 125.275 275.8	CLNC DEL 125.275 275.8
-----------------------	--	-----------------------------------	---------------------------------	----------------------------------



CATEGORY	A	B	C	D
S-ILS 5R	RA 150/14 150 DA 886			
SA CATEGORY I ILS - SPECIAL AIRCREW & AIRCRAFT CERTIFICATION REQUIRED				

EC-2, 11 JUL 2024 to 08 AUG 2024

EC-2, 11 JUL 2024 to 08 AUG 2024