


LOC I-LCK <b>110.1</b>	APP CRS <b>232°</b>	Rwy Idg	23L	23R
		TDZE	<b>740</b>	<b>743</b>
		Apt Elev	<b>744</b>	<b>744</b>

# ILS or LOC RWY 23L

RICKENBACKER INTL (LCK)

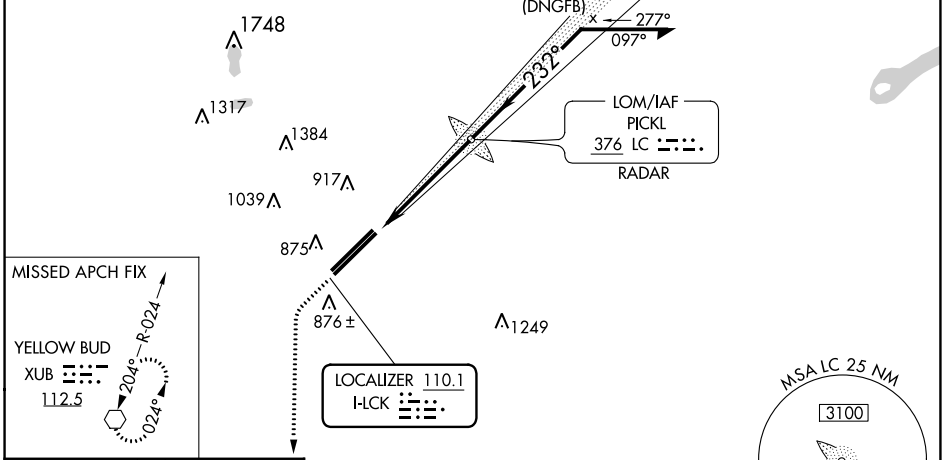
**⚠** Circling NA northwest of Rwy 5L-23R. When local altimeter setting not received, use John Glenn Columbus Intl altimeter setting: increase DA to 975 feet; increase all MDAs 40 feet and S-LOC 23L visibility Cats C/D to RVR 5500 and Circling visibility Cat D to 2¼ SM. Autopilot coupled approach NA below 1000 MSL.

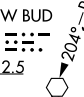
**MALSR**  
  
 MISSED APPROACH: Climb to 3000, then left turn direct XUB VOR and hold.

ATIS <b>132.75</b>	COLUMBUS APP CON <b>134.0 279.6</b>	RICK TOWER <b>120.05 348.4</b>	GND CON <b>125.275 275.8</b>	CLNC DEL <b>125.275 275.8</b>
-----------------------	--	-----------------------------------	---------------------------------	----------------------------------

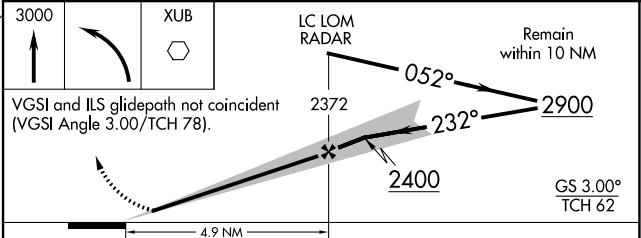
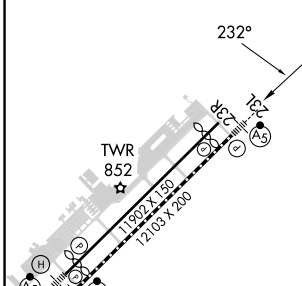
ALTERNATE MISSED APCH FIX  
  
 PICKL  
 376 LC

## RADAR REQUIRED



MISSED APCH FIX  
 YELLOW BUD  
 XUB  
 112.5  


ELEV 744	TDZE 23L 740
	TDZE 23R 743



CATEGORY	A	B	C	D
S-ILS 23L	940/24 200 (200-½)			
S-LOC 23L	1 220/24	480 (500-½)	1 220/50	480 (500-1)
SIDESTEP RWY 23R	1 220-1	477 (500-1)	1 220-1½ 477 (500-1½)	1 220-2 477 (500-2)
CIRCLING	1 240-1	496 (500-1)	1 280-1½ 536 (600-1½)	1 400-2 656 (700-2)

TDZ/CL Rwy 5R  
 REIL Rwy 23R  
 HIRL Rwy 5L-23R and 5R-23L

FAF to MAP 4.9 NM

Knots	60	90	120	150	180
Min:Sec	4:54	3:16	2:27	1:58	1:38

EC-2, 11 JUL 2024 to 08 AUG 2024

EC-2, 11 JUL 2024 to 08 AUG 2024