

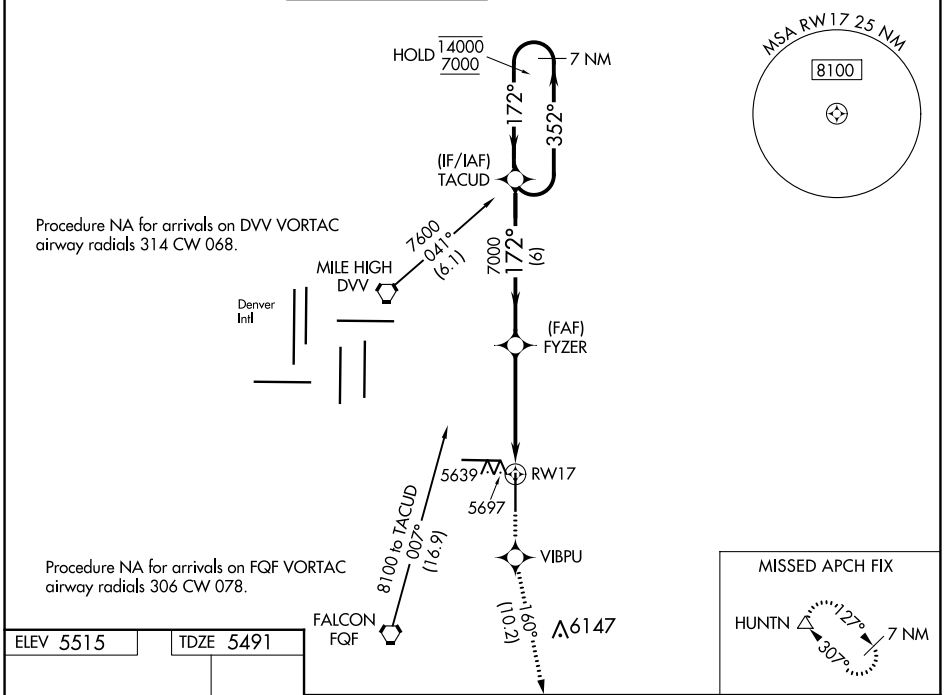
WAAS CH 82209 W17A	APP CRS 172°	Rwy Idg TDZE Apt Elev	8000 5491 5515
--	------------------------	-----------------------------	---

RNAV (GPS) RWY 17

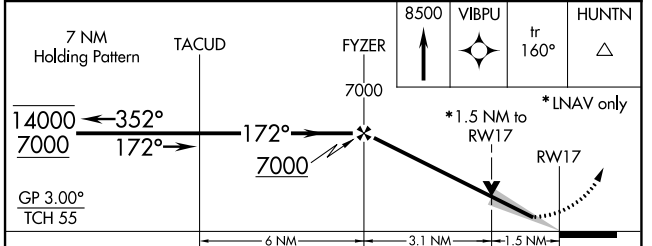
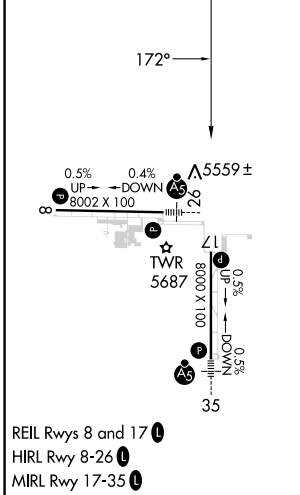
COLORADO AIR AND SPACE PORT (CFO)

RNP APCH-GPS.				MISSED APPROACH: Climb to 8500 direct VIBPU and on track 160° to HUNTN and hold.			
<p>▼ For uncompensated Baro-VNAV systems, LNAV/VNAV NA below -25°C or above 48°C.</p>							

ATIS 119.025	DENVER APP CON 128.25 371.95	SPACE PORT TOWER* 120.2 (CTAF) 0	GND CON 124.7	CLNC DEL 124.7	CLNC DEL 121.75 (When twr closed)	UNICOM 122.95
------------------------	--	--	-------------------------	--------------------------	--	-------------------------



ELEV 5515	TDZE 5491
-----------	-----------



CATEGORY	A	B	C	D
LPV DA	5691-3/4 200 (200-3/4)			
LNAV/VNAV DA	5916-1 3/8 425 (500-1 3/8)			
LNAV MDA	6000-1	509 (500-1)	6000-1 1/2	509 (500-1 1/2)
C CIRCLING	6000-1	485 (500-1)	6100-1 1/2 585 (600-1 1/2)	6300-2 1/2 785 (800-2 1/2)

SW-1, 11 JUL 2024 to 08 AUG 2024

SW-1, 11 JUL 2024 to 08 AUG 2024