

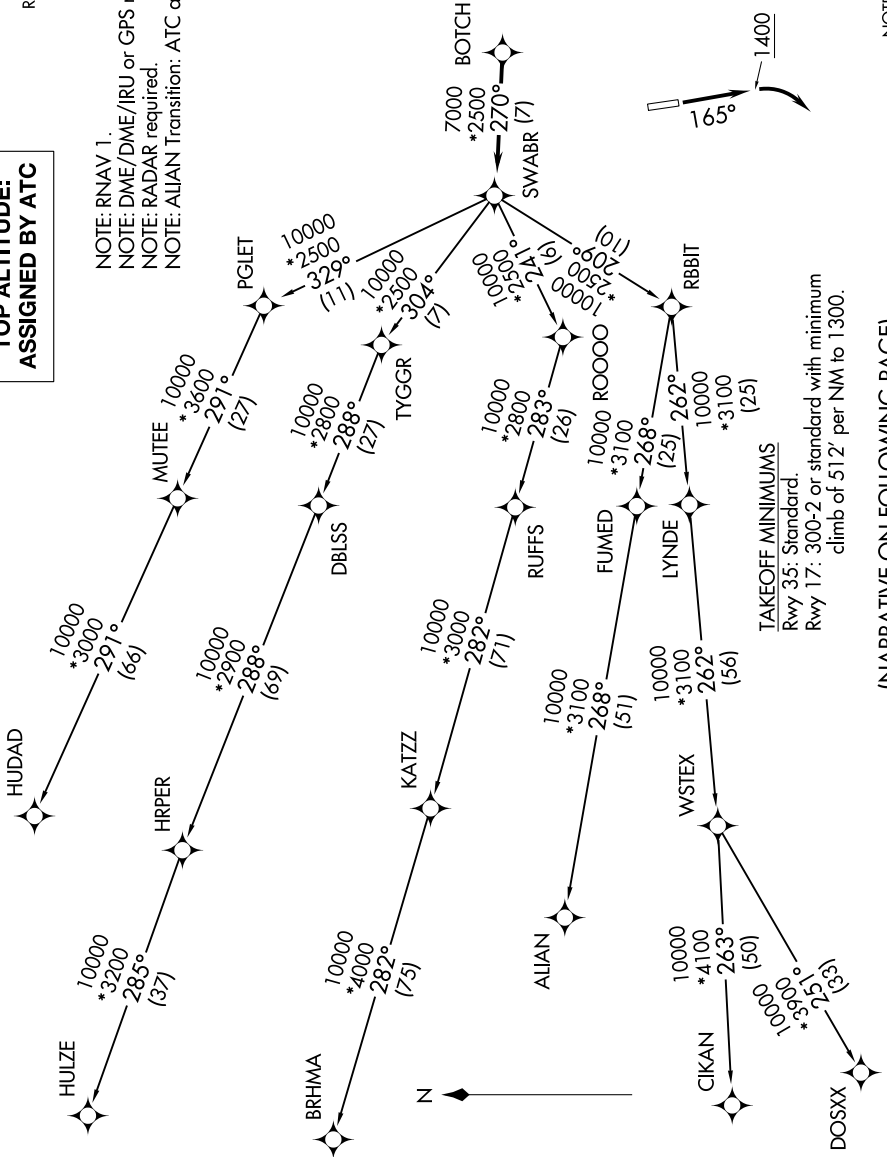
SWABR ONE DEPARTURE (RNAV)

SC-2, 11 JUL 2024 to 08 AUG 2024

CTAF
1230
REGIONAL DEP CON
135.975 379.9

TOP ALTITUDE: ASSIGNED BY ATC

NOTE: RNAV 1.
NOTE: DME/DME/IRU or GPS required.
NOTE: RADAR required.
NOTE: ALIAN Transition: ATC assigned only.



TAKEOFF MINIMUMS
Rwy 35: Standard.
Rwy 17: 300-2 or standard with minimum
climb of 512' per NM to 1300.

NOTE: Chart not to scale.

(NARRATIVE ON FOLLOWING PAGE)

SC-2, 11 JUL 2024 to 08 AUG 2024

SWABR ONE DEPARTURE (RNAV)