


LOC I-AEG <b>110.1</b>	APP CRS <b>215°</b>	Rwy Idg TDZE Apt Elev	<b>7398</b> <b>5817</b> <b>5837</b>
---------------------------	------------------------	-----------------------------	---

# ILS or LOC RWY 22

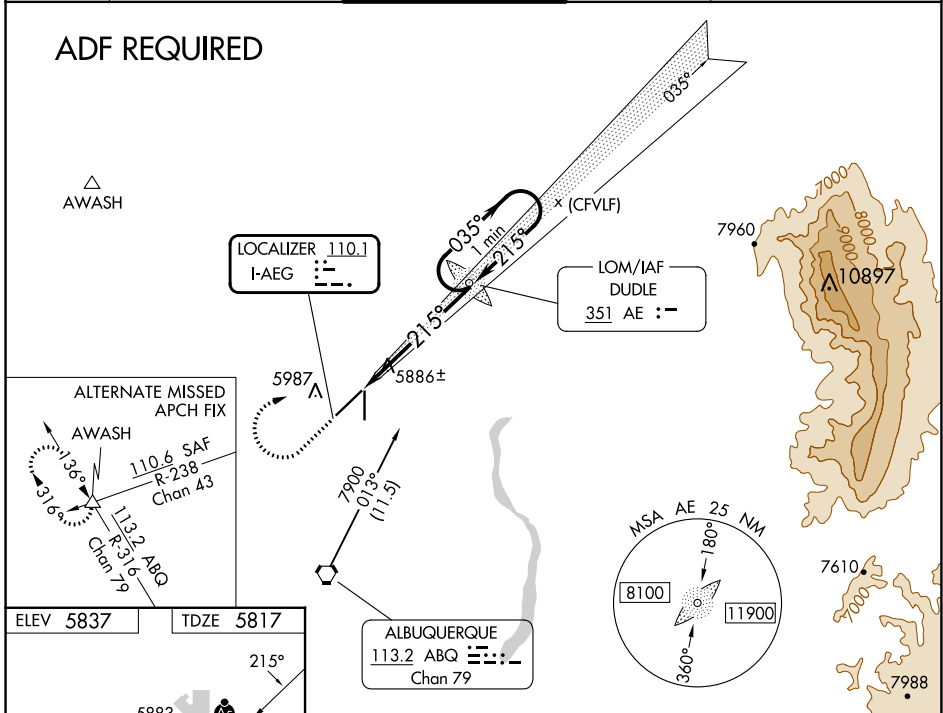
## DOUBLE EAGLE II (A/E/G)

**NA** When local altimeter setting not received, use Albuquerque Intl Suport altimeter setting and increase all DA 94 feet, increase all MDA 100 feet, and increase visibility S-LOC 22 Cats C/D ¼ mile, Circling Cats C/D ½ mile. For inop MALSr when using Albuquerque Intl Suport altimeter setting, increase visibility S-ILS 22 all Cats ¾ mile.

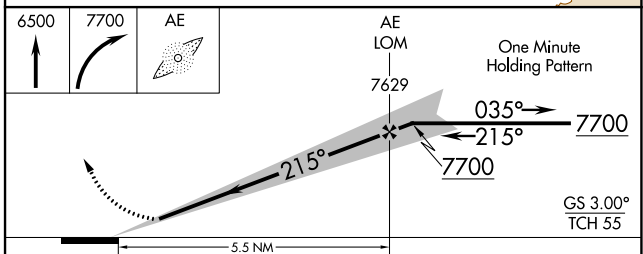
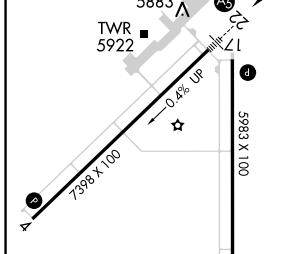
**MALSr**  MISSED APPROACH: Climb to 6500 then climbing right turn 7700 direct DUDLE LOM and hold.

ATIS <b>119.025</b>	ALBUQUERQUE APP CON <b>127.4 253.5</b>	DOUBLE EAGLE II TOWER * <b>120.15 (CTAF)</b>	GND CON <b>121.625</b>	CLNC DEL <b>124.8</b> (When twr closed)
------------------------	---	---	---------------------------	---

### ADF REQUIRED



ELEV 5837	TDZE 5817
-----------	-----------



REIL Rwy 17 and 35	MIRL Rwy 4-22 and 17-35	FAF to MAP 5.5 NM				
Knots	60	90	120	150	180	
Min:Sec	5:30	3:40	2:45	2:12	1:50	
<b>CIRCLING</b>	6400-1	563 (600-1)	6420-1½	583 (600-1½)	6640-2½	803 (900-2½)

SW-1, 11 JUL 2024 to 08 AUG 2024

SW-1, 11 JUL 2024 to 08 AUG 2024