

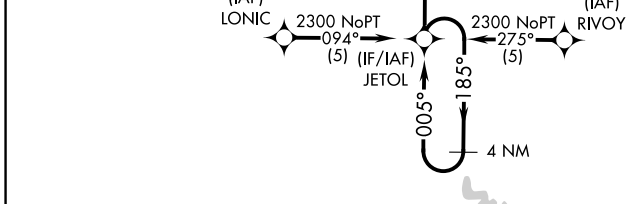
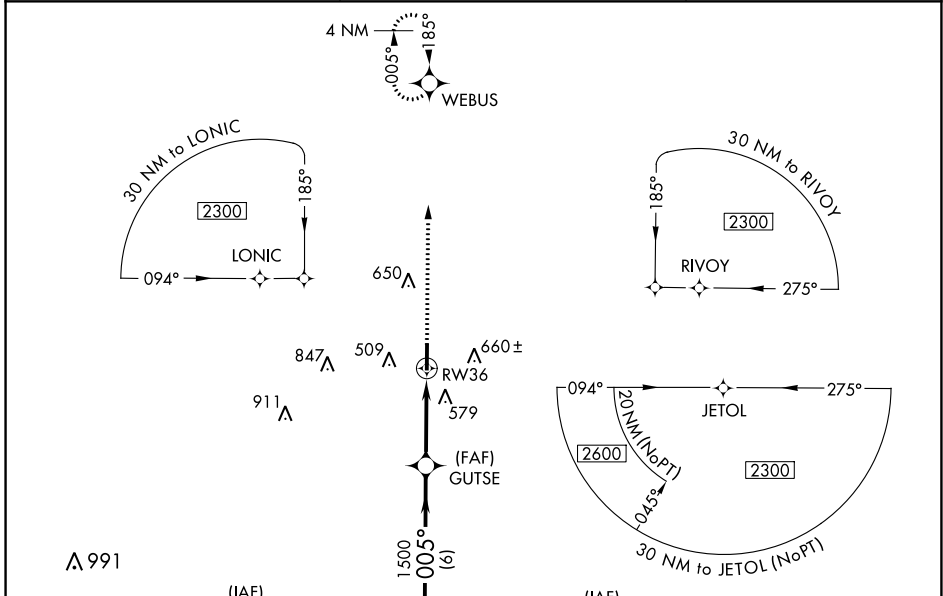
APP CRS	Rwy Idg	5003
005°	TDZE	339
	Apt Elev	345

RNAV (GPS) RWY 36

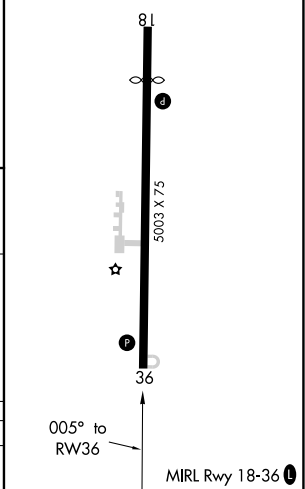
DR C P SAVAGE SR (53A)

RNP APCH.	<p>Use American altimeter setting, when not received use Macon altimeter setting and increase all MDA 20 feet, increase LNAV Cat C visibility to 1$\frac{3}{4}$. Procedure NA at night. Rwy 36 helicopter visibility reduction below 1 SM NA.</p>	<p>MISSED APPROACH: Climb to 2300 direct WEBUS WP and hold.</p>
<p>▽ Use American altimeter setting, when not received use Macon altimeter setting and increase all MDA 20 feet, increase LNAV Cat C visibility to 1$\frac{3}{4}$. Procedure NA at night. Rwy 36 helicopter visibility reduction below 1 SM NA.</p> <p>△ NA</p>		

ACJ AWOS-3 128.375	ATLANTA APP CON * 124.2 279.6	CTAF 122.9
------------------------------	---	----------------------



ELEV	345	TDZE	339
------	-----	------	-----



4 NM Holding Pattern	VGSI and descent angle not coincident (VGSI Angle 3.00/TCH 31).		
2300	← 185°	→ 005°	2300 WEBUS
		005°	GUTSE
		3.04° TCH 45	RW36
		1500	
		6 NM	3.5 NM

CATEGORY	A	B	C	D
LNAV MDA	900-1	561 (600-1)	900-1 $\frac{5}{8}$ 561 (600-1 $\frac{5}{8}$)	NA

SE-4, 11 JUL 2024 to 08 AUG 2024

SE-4, 11 JUL 2024 to 08 AUG 2024