

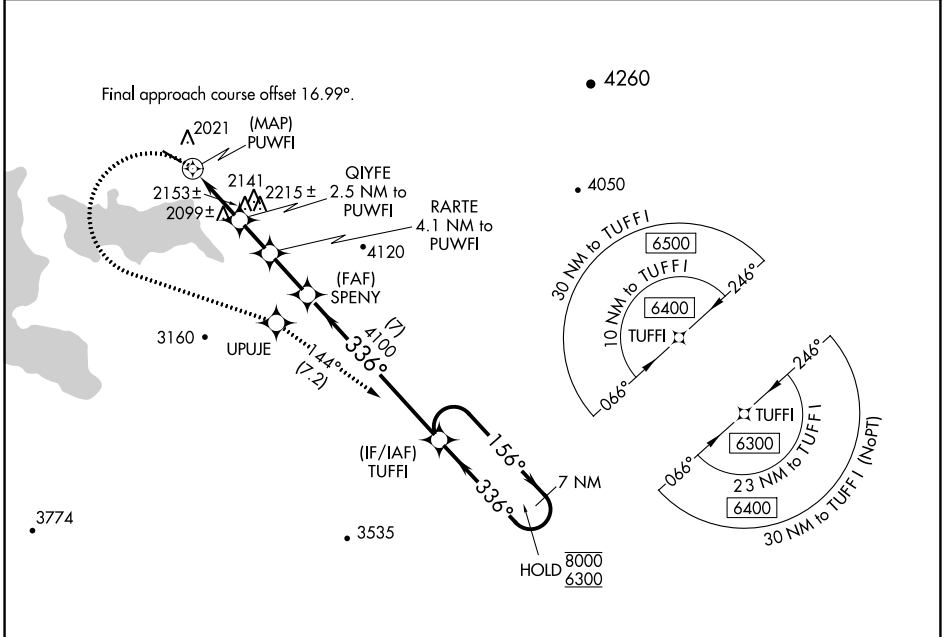
WAAS CH 99444 W32A	APP CRS 336°	Rwy Idg 4299 TDZE 1821 Apt Elev 1821
--	------------------------	---

RNAV (GPS) RWY 32

STEPHEN A BEAN MUNI (8B)(f)

RNP APCH - GPS.	MISSED APPROACH: Climbing left turn to 6300 direct UPUJE and track 144° to TUFFI and hold, continue climb-in-hold to 6300.
⚠ Circling NA for Cat C northeast of Rwy 14-32. Procedure NA at night. ⚠ Rwy 32 helicopter visibility reduction below 1 SM NA.	

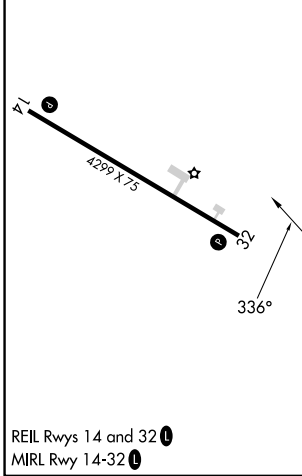
AWOS-3PT 118.0	BOSTON CENTER 124.25 290.5	UNICOM 122.8 (CTAF) (f)
--------------------------	--------------------------------------	-----------------------------------



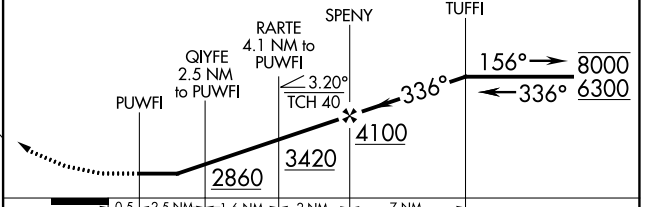
NE-1, 11 JUL 2024 to 08 AUG 2024

NE-1, 11 JUL 2024 to 08 AUG 2024

ELEV 1821	TDZE 1821
-----------	-----------



6300	UPUJE	tr 144°	TUFFI	VGSI and descent angles not coincident (VGSI Angle 3.00/TCH 40).	7 NM Holding Pattern
------	-------	---------	-------	--	----------------------



SCALE: 0.5, 2.5 NM, 1.6 NM, 2 NM, 7 NM				
CATEGORY	A	B	C	D
LP MDA	2560-1	739 (800-1)	2560-2 739 (800-2)	NA
LNAV MDA	2640-1 819 (900-1)	2640-1½ 819 (900-1½)	2640-2½ 819 (900-2½)	NA
C CIRCLING	2640-1½ 819 (900-1½)	2640-2½ 819 (900-2½)	2640-2½ 819 (900-2½)	NA