

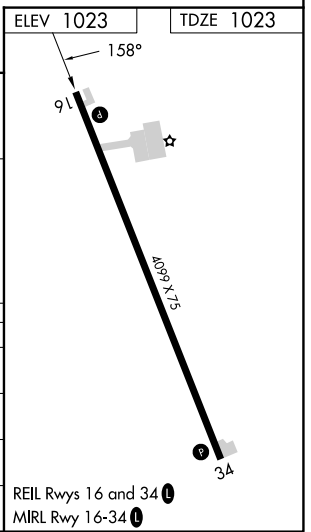
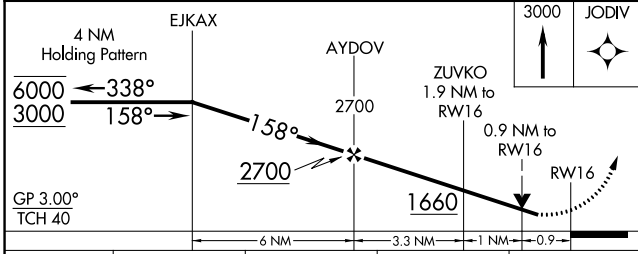
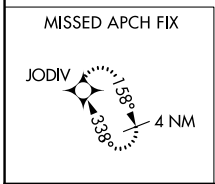
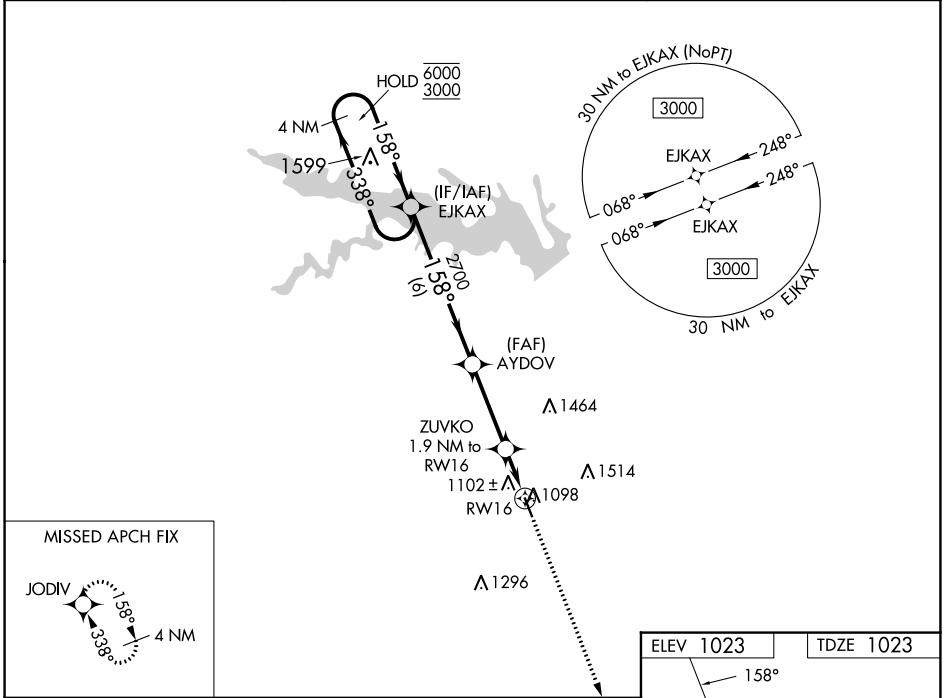
WAAS CH <b>70440</b> <b>W16A</b>	APP CRS <b>158°</b>	Rwy Idg TDZE Apt Elev	<b>4099</b> <b>1023</b> <b>1023</b>
--	------------------------	-----------------------------	---

# RNAV (GPS) RWY 16

CENTERVILLE MUNI (TVK)

RNP APCH - GPS.		MISSED APPROACH: Climb to 3000 direct JODIV and hold.
<p>▼ Rwy 16 helicopter visibility reduction below 3/4 SM NA. For uncompensated Baro-VNAV systems, procedure NA below -22°C or above 54°C.</p> <p>▲</p>		

AWOS-3 <b>123.775</b>	CHICAGO CENTER <b>118.15 335.575</b>	UNICOM <b>122.8 (CTAF) 0</b>
--------------------------	---	---------------------------------



CATEGORY	A	B	C	D
LPV DA	1273-1	250 (300-1)		NA
LNAV/VNAV DA	1273-1	250 (300-1)		NA
LNAV MDA	1360-1	337 (400-1)		NA
CIRCLING	1420-1 397 (400-1)	1660-1 637 (700-1)		NA

NC-3, 11 JUL 2024 to 08 AUG 2024

NC-3, 11 JUL 2024 to 08 AUG 2024