

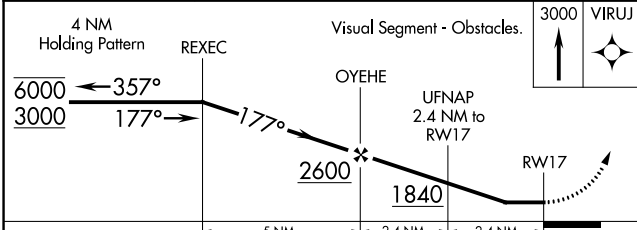
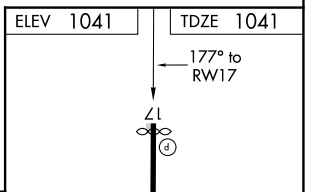
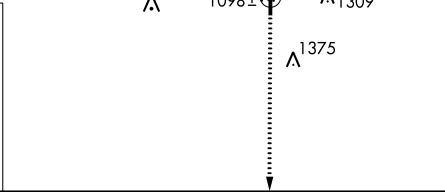
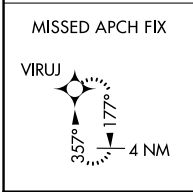
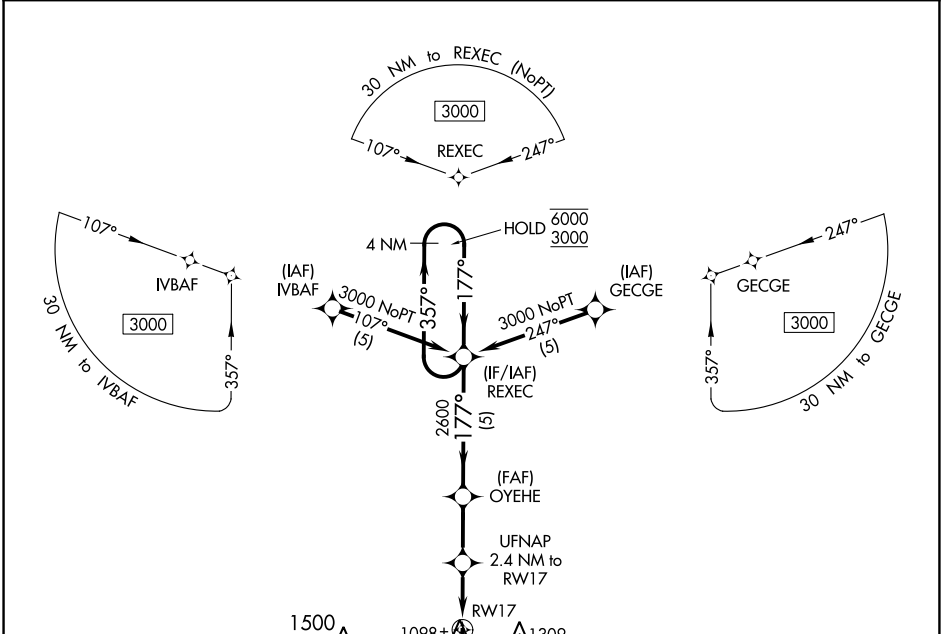
APP CRS Rwy Idg **3490**
 177° TDZE **1041**
 Apt Elev **1041**

RNAV (GPS) RWY 17

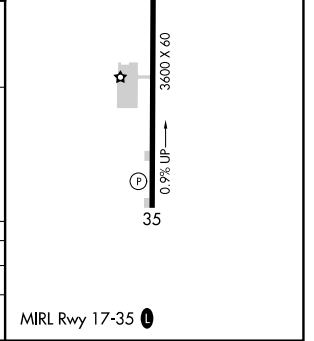
PRAGUE MUNI (O47)

RNP APCH. Procedure NA at night. Rwy 17 helicopter visibility reduction below 1 SM NA.
 MISSED APPROACH: Climb to 3000 direct VIRUJ and hold.

FORT WORTH CENTER **132.2 338.35** CTAF **122.9 0**



CATEGORY	A	B	C	D
LNAV MDA	1400-1	359 (400-1)		NA
CIRCLING	1480-1 439 (500-1)	1500-1 459 (500-1)	1720-2 679 (700-2)	NA



SC-1, 11 JUL 2024 to 08 AUG 2024

SC-1, 11 JUL 2024 to 08 AUG 2024