

|  |                        |                             |   |
|--|------------------------|-----------------------------|---|
| WAAS<br>CH <b>45716</b><br><b>W35A</b> | APP CRS<br><b>354°</b> | Rwy Idg<br>TDZE<br>Apt Elev | <b>5001</b><br><b>956</b><br><b>971</b> |
|--|------------------------|-----------------------------|---|

# RNAV (GPS) RWY 35

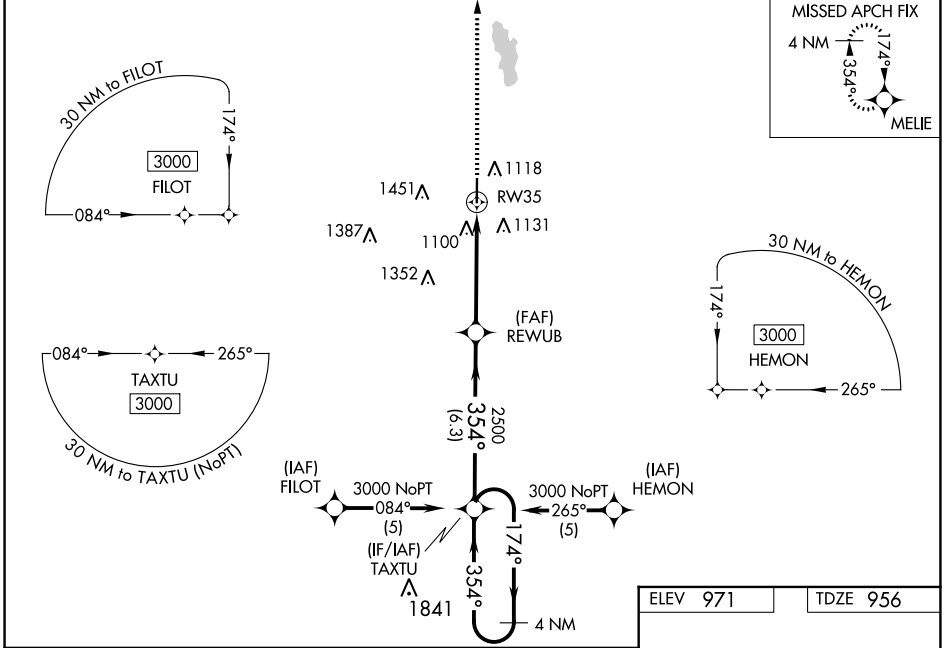
PAULS VALLEY MUNI (P.V.J)

**RNP APCH.**

When local altimeter setting not received, use Ardmore Downtown Exec altimeter setting: increase all DA 97 feet and all MDA 100 feet; increase LPV and LNAV/VNAV all Cats visibility and LNAV Cats C/D and Circling Cat C visibility ¼ SM and Circling Cat D visibility ½ SM. Baro-VNAV and VDP NA when using Ardmore Downtown Exec altimeter setting. For uncompensated Baro-VNAV systems, LNAV/VNAV NA below -16°C or above 46°C.

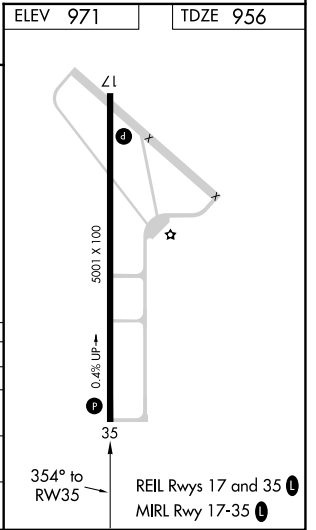
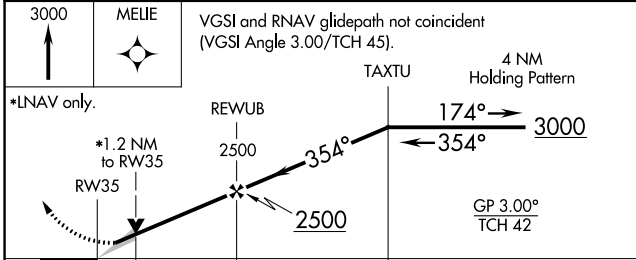
**MISSED APPROACH:**  
Climb to 3000 direct MELIE and hold.

|                          |  |                                 |
|--------------------------|--|---------------------------------|
| AWOS-3<br><b>118.675</b> | FORT WORTH CENTER<br><b>124.75 323.0</b> | UNICOM<br><b>122.8 (CTAF) ①</b> |
|--------------------------|--|---------------------------------|



SC-1, 11 JUL 2024 to 08 AUG 2024

SC-1, 11 JUL 2024 to 08 AUG 2024



| CATEGORY     | A      | B           | C            | D            |
|--------------|--------|-------------|--------------|--------------|
| LPV DA       |        | 1156-¾      | 200 (200-¾)  |              |
| LNAV/VNAV DA |        | 1447-1¾     | 491 (500-1¾) |              |
| LNAV MDA     | 1360-1 | 404 (400-1) | 1360-1¼      | 404 (400-1¼) |
| CIRCLING     | 1440-1 | 469 (500-1) | 1540-1½      | 1760-2½      |
|              |        |             | 569 (600-1½) | 789 (800-2½) |