

WAAS CH <b>90139</b> <b>W35A</b>	APP CRS <b>352°</b>	Rwy Idg TDZE Apt Elev	<b>4794</b> <b>1010</b> <b>1033</b>
--	------------------------	-----------------------------	---

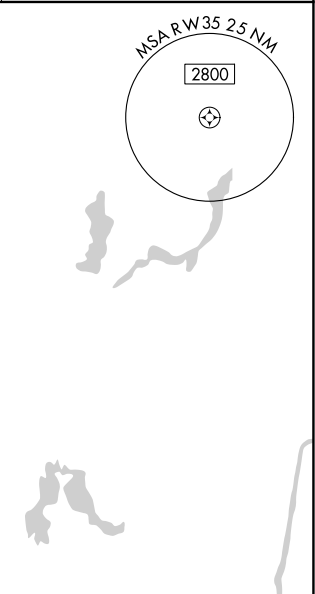
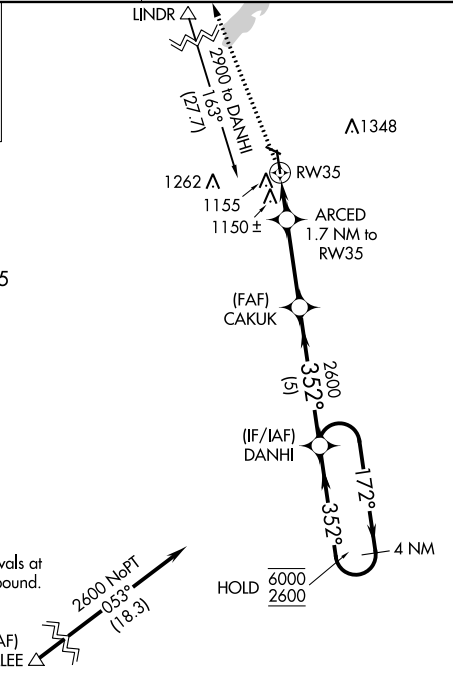
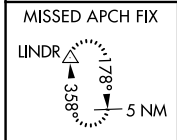
# RNAV (GPS) RWY 35

MORA MUNI (JMR)

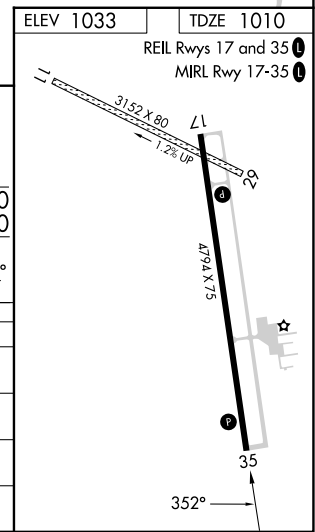
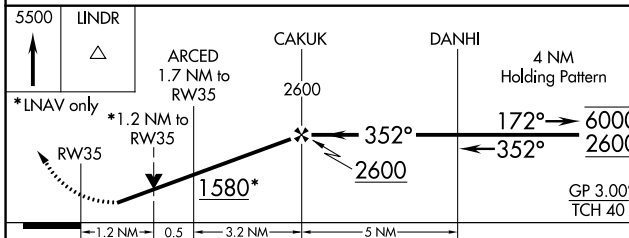
RNP APCH.  
 ▼ Circling NA to Rwys 11 and 29. Circling Rwy 17 NA at night.  
 ▲ Rwy 35 helicopter visibility reduction below 3/4 SM NA.  
 For uncompensated Baro-VNAV systems, LNAV/VNAV NA below -17°C or above 54°C.

MISSED APPROACH: Climb to 5500 direct LINDR and hold, continue climb-in-hold to 5500.

AWOS-3 <b>123.925</b>	MINNEAPOLIS CENTER <b>121.05 235.775</b>	UNICOM <b>122.8 (CTAF) 0</b>
--------------------------	---	---------------------------------



Procedure NA for arrivals at OLLEE on T383 southbound.  
 (IAF) OLLEE  $\Delta$  2600 NoPT 053° (18.3)



CATEGORY	A	B	C	D
LPV DA	1269-1 259 (300-1)			
LNAV/VNAV DA	1316-1 306 (300-1)			
LNAV MDA	1420-1 410 (400-1)	1420-1 1/8 410 (400-1 1/8)		
<b>C</b> CIRCLING	1480-1 447 (500-1)	1500-1 467 (500-1)	1700-2 667 (700-2)	1700-2 1/4 667 (700-2 1/4)

NC-1, 11 JUL 2024 to 08 AUG 2024

NC-1, 11 JUL 2024 to 08 AUG 2024