

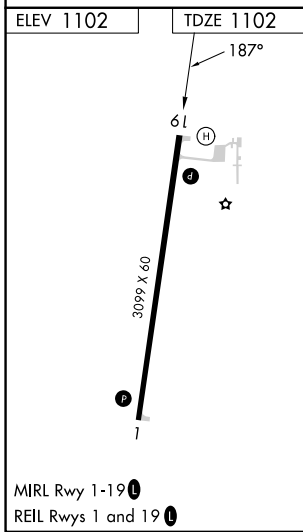
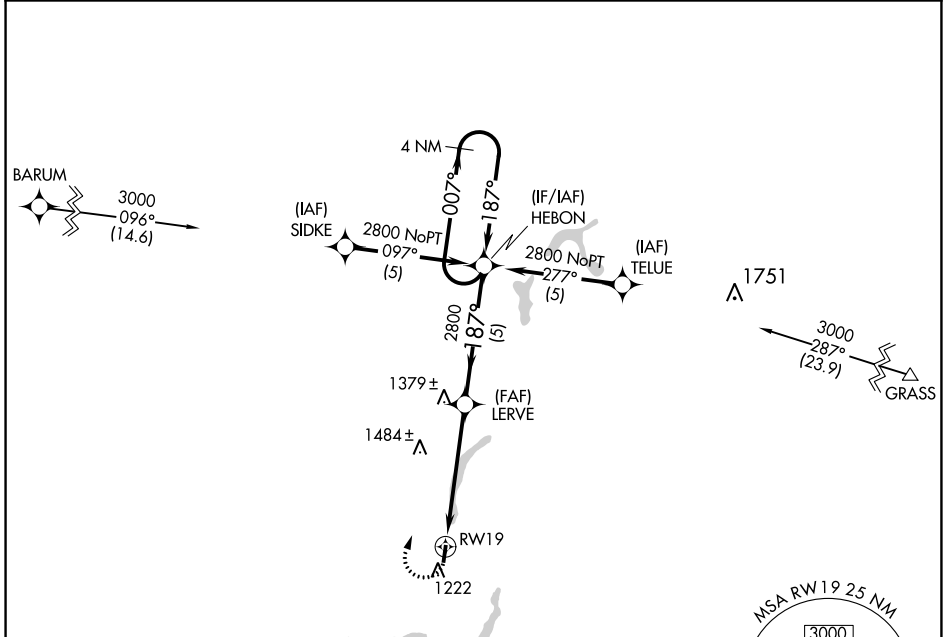
APP CRS	Rwy Idg	3099
187°	TDZE	1102
	Apt Elev	1102

RNAV (GPS) RWY 19

SOLO SPRINGS MUNI (OLG)

RNP APCH.	MISSED APPROACH: Climbing right turn to 2800 direct HEBON WP and hold.
<p>▼ Straight-in Rwy 19 NA at night, Circling Rwy 19 NA at night. Rwy 19 helicopter visibility reduction below 1 SM NA.</p>	

AWOS-3 119.6	DULUTH APP CON 125.45 233.7	CTAF 122.9
------------------------	---------------------------------------	----------------------



ELEV 1102	TDZE 1102	Visual Segment - Obstacles.		4 NM Holding Pattern
CATEGORY	A	B	C	D
LNAV MDA	1800-1	698 (700-1)	1800-2 698 (700-2)	NA
C CIRCLING	1800-1	698 (700-1)	1800-2 698 (700-2)	NA

EC-3, 11 JUL 2024 to 08 AUG 2024

EC-3, 11 JUL 2024 to 08 AUG 2024