

BARMY FIVE DEPARTURE (RNAV)

SE-2, 11 JUL 2024 to 08 AUG 2024

CHARLOTTE DEP CON
134.75 257.2
AWOS-3
119.675
CLNC DEL (GCO)
124.9
UNICOM
123.05

TOP ALTITUDE:
3000

RNAV 1 - DME/DME/IRU or GPS.
RADAR required.

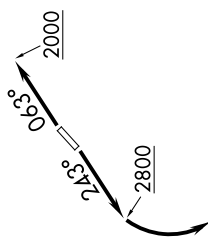
DATTO

RALEIGH/DURHAM
RDU

TAR RIVER
TYI

NOTE: For turbo jets only.
NOTE: If unable to accept climb rates, advise ATC on initial contact.
NOTE: Transponder code will be issued via PDC or Charlotte CLNC DEL.
NOTE: Upon reaching 10000 MSL, accelerate to and maintain 280K,
if unable advise ATC.

OLUBE



N

MESHY
(18)

GULFY
(13)

BARMY
(13)

BATTA

EBOOK

NUITZE

FL180
077°
*1900
(39)

FL180
077°
*3400
(70)

FL180
077°
*2300
(22)

FL180
077°
*3300
(7)

FL180
077°
*1900
(39)

FL180
077°
*2100
(13)

FL180
077°
*1900
(39)

FL180
077°
*1900
(39)

FL180
077°
*1900
(39)

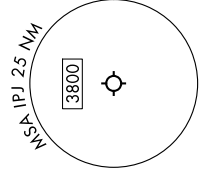
FL180
077°
*1900
(39)

FL180
077°
*1900
(39)

FL180
077°
*1900
(39)

FL180
077°
*1900
(39)

TAKEOFF MINIMUMS
Rwys 5, 23: Standard.



NOTE: Chart not to scale.

DEPARTURE ROUTE DESCRIPTION

TAKEOFF RUNWAY 5: Climb on heading 063° to 2000 before proceeding on course, then on heading assigned by ATC, thence. . . .
TAKEOFF RUNWAY 23: Climb on heading 243° to 2800 before turning left, then on heading assigned by ATC, thence. . . .

. . . on RADAR vectors to MESHY, then on depicted route to BARMY. Then on assigned transition. Maintain 3000, expect clearance to filed altitude within 10 minutes after departure.

- NUITZE TRANSITION (BARMY5.NUITZE)
- RALEIGH/DURHAM TRANSITION (BARMY5.RDUJ)
- TAR RIVER TRANSITION (BARMY5.TYI)

SE-2, 11 JUL 2024 to 08 AUG 2024