

WAAS CH 56318 W29A	APP CRS 292°	Rwy ldg TDZE Apt Elev	4266 831 838
--	------------------------	-----------------------------	---

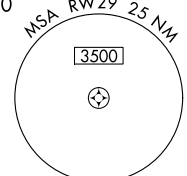
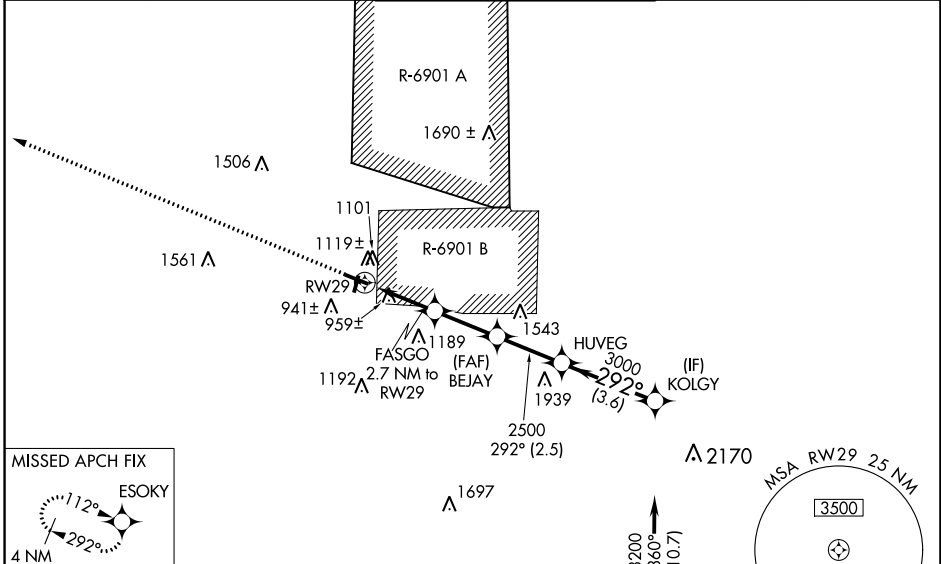
RNAV (GPS) RWY 29

SPARTA/FORT MC COY (CMY)

⚠ Circling to Rwy 19 NA at night. For uncompensated Baro-VNAV systems, LNAV/VNAV NA below -16°C (4°F) or above 38°C (100°F). DME/DME RNP-0.3 NA. Helicopter visibility reduction below 1 SM not authorized. Baro-VNAV and VDP NA when using La Crosse altimeter setting. When local altimeter setting not received, use La Crosse altimeter setting and increase all DA 79 feet and all MDA 80 feet; increase LPV all Cats visibility 3/8 mile, and LNAV/VNAV all Cats and LNAV and Circling Cats C/D visibility 1/4 mile. Procedure not authorized when R-6901B is active.

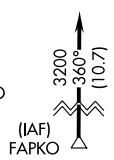
MISSED APPROACH:
Climb to 4000 direct
ESOKY and hold.

ASOS 119.775	VOLK APP CON ★ 135.25 244.875	SPARTA/MC COY TOWER ★ 124.6 254.375	GND CON 123.625	CTAF 124.6
------------------------	---	---	---------------------------	----------------------

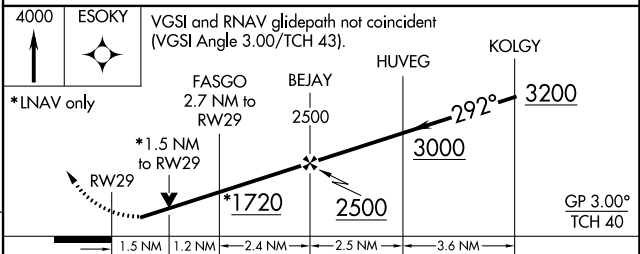
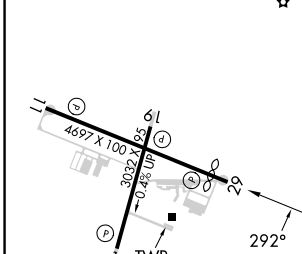


ELEV 838	TDZE 831
-----------------	-----------------

Procedure NA for arrivals at FAPKO on V82-170-510 eastbound.



4000 ESOKY VGSi and RNAV glidepath not coincident (VGSi Angle 3.00/TCH 43).



	1.5 NM	1.2 NM	2.4 NM	2.5 NM	3.6 NM	
CATEGORY	A		B	C	D	
LPV DA	1107-7/8		276 (300-7/8)			
LNAV/VNAV DA	1263-1 1/2		432 (500-1 1/2)			
LNAV MDA	1320-1	489 (500-1)		1320-1 3/8	489 (500-1 3/8)	
CIRCLING	1520-1 682 (700-1)	1560-1 722 (800-1)	1620-2 1/4 782 (800-2 1/4)	1860-3 1022 (1100-3)		

REIL Rwy 11 and 29
MIRL Rwy 1-19 and 11-29

EC-3, 11 JUL 2024 to 08 AUG 2024

EC-3, 11 JUL 2024 to 08 AUG 2024