

WAAS CH <b>93614</b> W35A	APP CRS <b>353°</b>	Rwy Idg <b>4317</b> TDZE <b>1636</b> Apt Elev <b>1636</b>
---------------------------------	------------------------	---

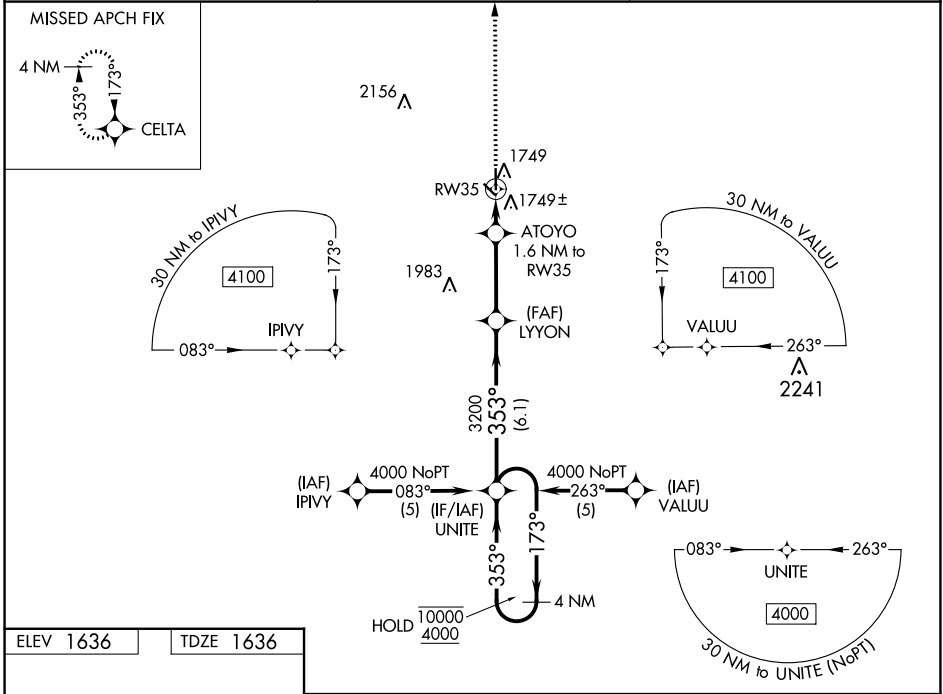
# RNAV (GPS) RWY 35

FAIRMONT STATE (F<sup>M</sup>Z)

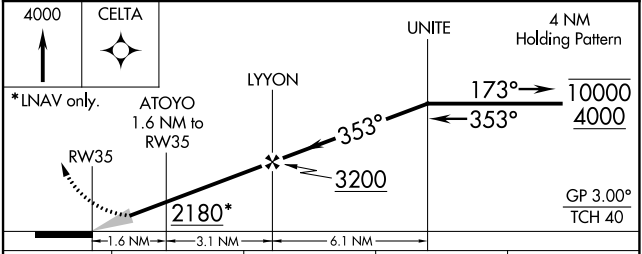
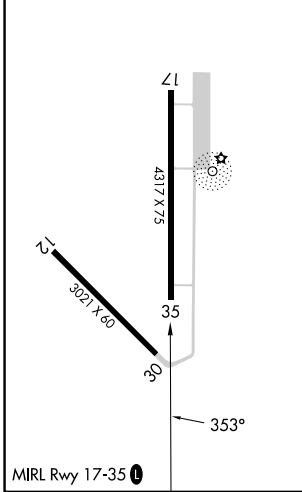
RNP APCH. MISSED APPROACH: Climb to 4000 direct CELTA and hold.

**⚠️ NA** Circling to Rwy 12, 30 NA at night. Baro-VNAV NA. Use York altimeter setting, when not received use Hebron altimeter setting and increase all DA 31 feet and all MDA 40 feet.

JYR AWOS-3 <b>124.175</b>	MINNEAPOLIS CENTER <b>119.4 278.8</b>	CTAF <b>122.9</b>
------------------------------	--	----------------------



ELEV 1636	TDZE 1636
-----------	-----------



CATEGORY	A	B	C	D
LPV DA	1934-1	298 (300-1)		NA
LNAV/VNAV DA	2094-1¾	458 (500-1¾)		NA
LNAV MDA	2060-1	424 (500-1)		NA
<b>C</b> CIRCLING	2120-1	484 (500-1)		NA

NC-2, 11 JUL 2024 to 08 AUG 2024

NC-2, 11 JUL 2024 to 08 AUG 2024