

WAAS CH 82005 W16A	APP CRS 163°	Rwy Idg TDZE Apt Elev	5000 1515 1535
--	------------------------	-----------------------------	---

RNAV (GPS) RWY 16

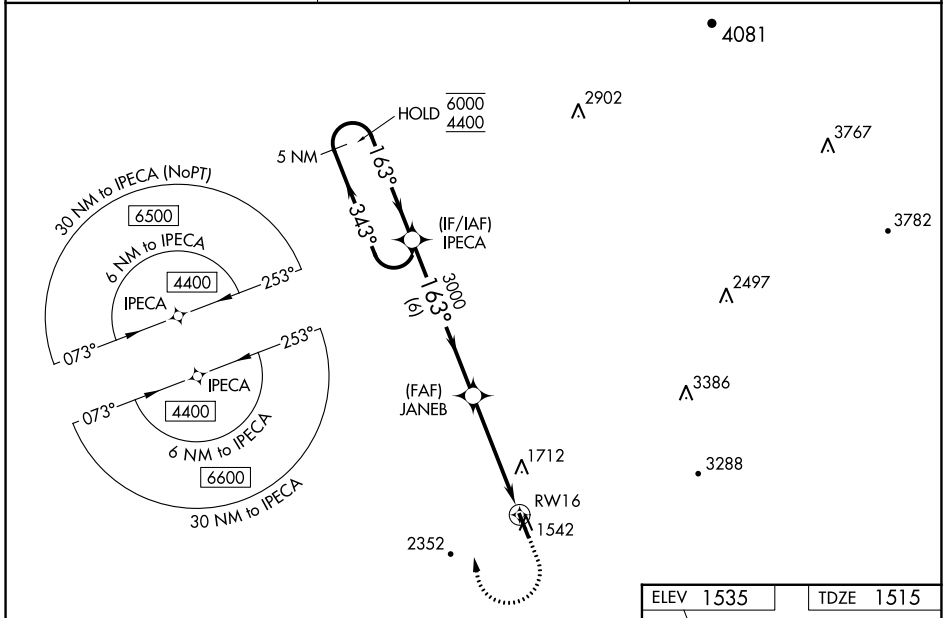
PICKENS COUNTY (JZP)

RNP APCH - GPS.

⚠ Rwy 16 helicopter visibility reduction below 3/4 SM NA.
For uncompensated Baro-VNAV systems, LNAV/VNAV NA below -18°C or above 54°C.

MISSED APPROACH: Climb to 3000 then climbing right turn to 4400 direct IPECA and hold.

AWOS-3PT 120.025	ATLANTA CENTER 133.1 342.425	UNICOM 122.725 (CTAF)
----------------------------	--	---------------------------------



SE-4, 11 JUL 2024 to 08 AUG 2024

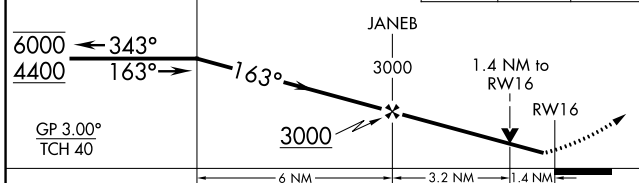
SE-4, 11 JUL 2024 to 08 AUG 2024

VGSI and RNAV glidepath not coincident (VGSI Angle 3.00/TCH 30).

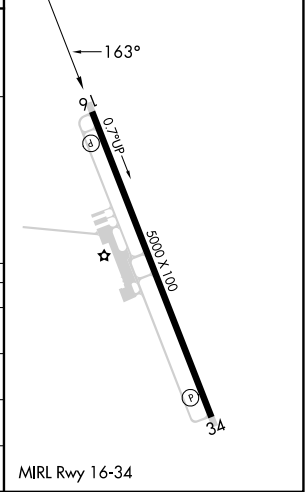
5 NM Holding Pattern IPECA

3000 4400 IPECA

GP 3.00° TCH 40



ELEV 1535	TDZE 1515
-----------	-----------



CATEGORY	A	B	C	D
LPV DA		1915-1 1/8	400 (400-1 1/8)	
LNAV/VNAV DA		1980-1 3/8	465 (500-1 3/8)	
LNAV MDA	1980-1	465 (500-1)	1980-1 3/8	465 (500-1 3/8)
CIRCLING	1980-1 445 (500-1)	2360-1 1/4 825 (900-1 1/4)	2760-3	1225 (1300-3)