

WAAS CH <b>90306</b> <b>W01A</b>	APP CRS <b>014°</b>	Rwy Idg TDZE Apt Elev	<b>6279</b> <b>1049</b> <b>1071</b>
--	------------------------	-----------------------------	---

# RNAV (GPS) RWY 1

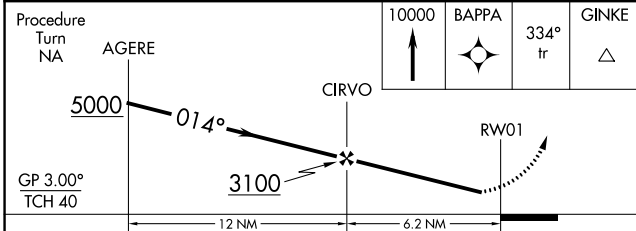
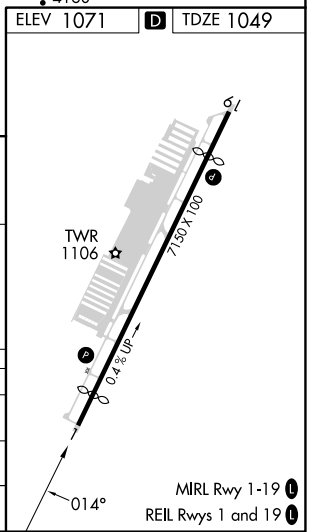
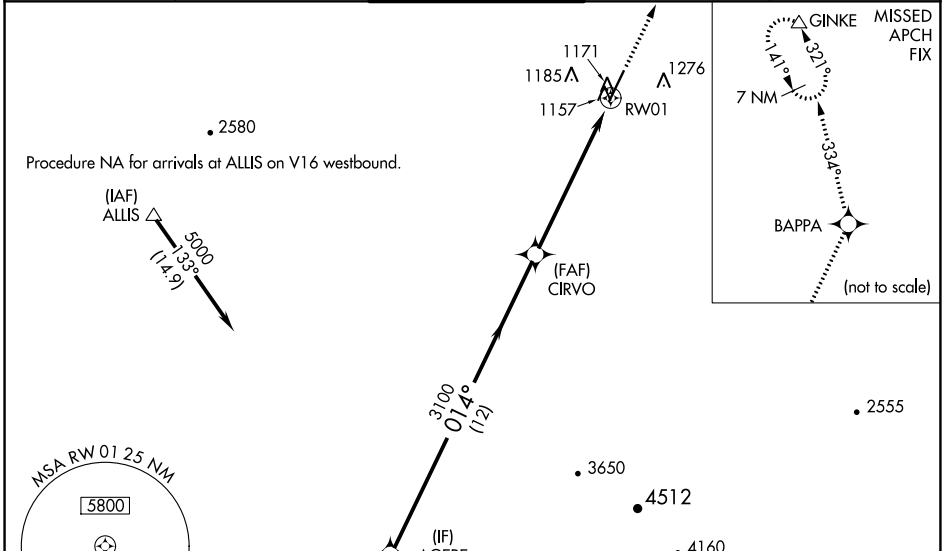
GLENDALE MUNI (GEU)

RNP APCH.

**⚠** Baro-VNAV NA when using Phoenix Sky Harbor Intl altimeter setting. For uncompensated Baro-VNAV systems, LNAV/VNAV NA below -17°C or above 47°C. When local altimeter setting not received, use Phoenix Sky Harbor Intl altimeter setting; increase LPV DA to 1438 feet; increase LNAV/VNAV DA to 1517 feet and all visibilities ¼ SM; increase all MDA 60 feet and LNAV Cat C and D visibility ¼ SM. Night landing: Rwy 1, Cat C and D operational VGSi required, remain on or above VGSi glidepath until threshold. Rwy 1 helicopter visibility reduction below ¾ SM NA.

MISSED APPROACH: Climb to 10000 direct BAPPA and on 334° track to GINKE and hold, continue climb-in-hold to 10000.

ATIS <b>119.425</b>	LUKE APP CON * <b>118.15 363.125</b>	GLENDALE TOWER * <b>121.0 (CTAF)</b>	GND CON <b>118.0</b>	UNICOM <b>122.95</b>
------------------------	---	---	-------------------------	-------------------------



CATEGORY	A	B	C	D
LPV DA	1378-1¼		329 (400-1¼)	
LNAV/VNAV DA	1457-1½		408 (400-1½)	
LNAV MDA	1440-1	391 (400-1)	1440-1⅛ 391 (400-1⅛)	1440-1¼ 391 (400-1¼)

SW-4, 11 JUL 2024 to 08 AUG 2024

SW-4, 11 JUL 2024 to 08 AUG 2024