

# KINGDOM FOUR DEPARTURE

FORT WORTH, TEXAS

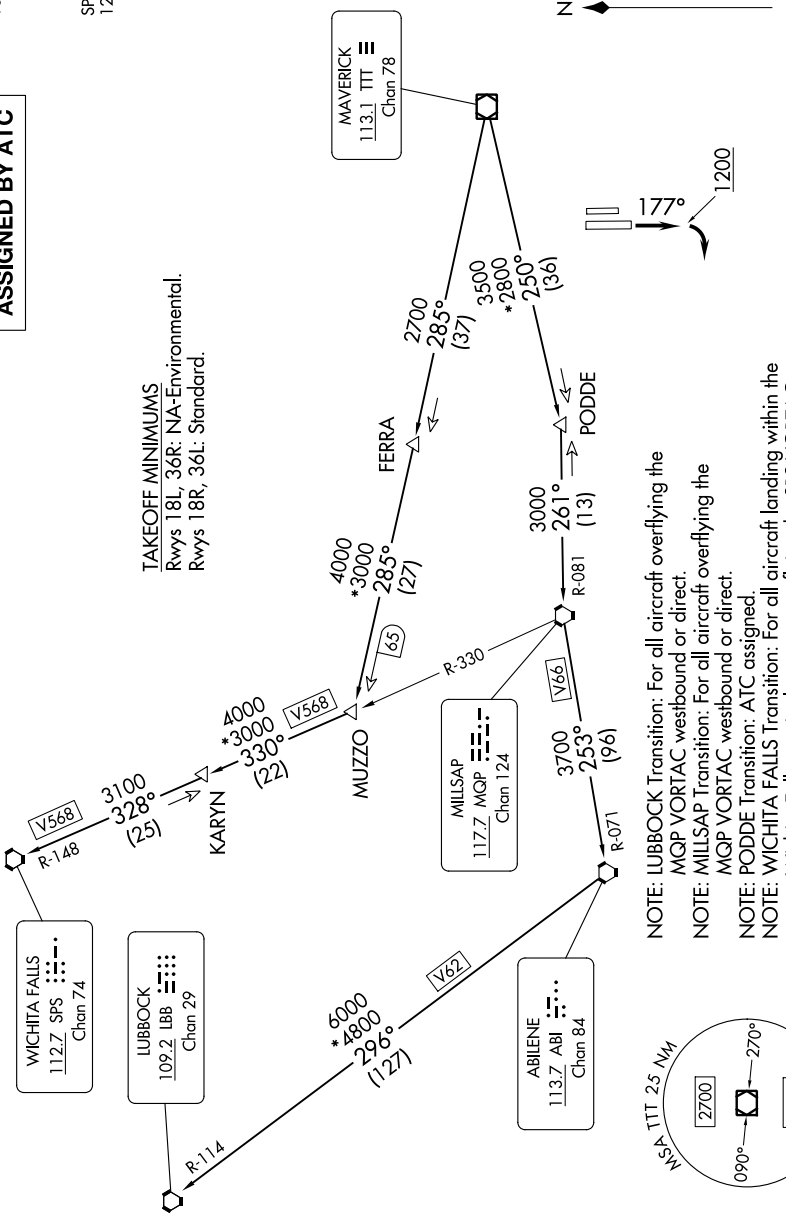
SC-2, 11 JUL 2024 to 08 AUG 2024

RADAR and DME required.

**TOP ALTITUDE:  
ASSIGNED BY ATC**

REGIONAL DEP CON  
135.975 379.9  
ATIS  
120.025  
GND CON  
119.475  
SPINKS TOWER \*  
124.625 (CTAF)

**TAKEOFF MINIMUMS**  
Rwys 18L, 36R: NA-Environmental.  
Rwys 18R, 36L: Standard.



- NOTE: LUBBOCK Transition: For all aircraft overlying the MQP VORTAC westbound or direct.
- NOTE: MILLSAP Transition: For all aircraft overlying the MQP VORTAC westbound or direct.
- NOTE: PODDE Transition: ATC assigned.
- NOTE: WICHITA FALLS Transition: For all aircraft landing within the Wichita Falls terminal area or overlying the SPS VORTAC.
- NOTE: For all aircraft requesting 17000 and below.

NOTE: Chart not to scale.

(CONTINUED ON FOLLOWING PAGE)

SC-2, 11 JUL 2024 to 08 AUG 2024

# KINGDOM FOUR DEPARTURE

FORT WORTH, TEXAS

FORT WORTH SPINKS (FWS)