

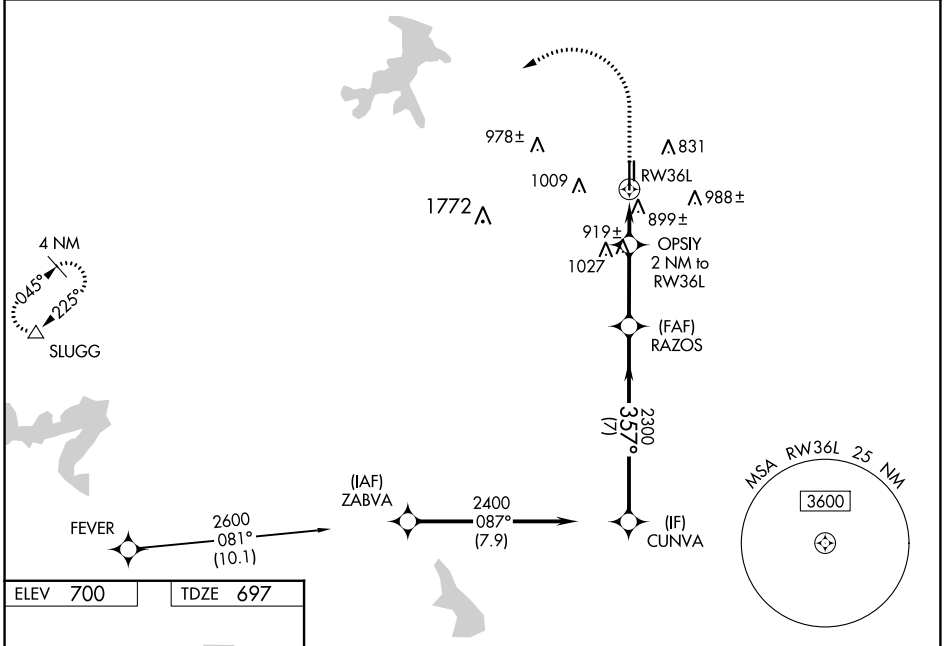
WAAS CH 57999 W36A	APP CRS 357°	Rwy Idg TDZE Apt Elev	6002 697 700
----------------------------------------	------------------------	-----------------------------	-----------------------------------------

RNAV (GPS) RWY 36L

FORT WORTH SPINKS (FWS)

RNP APCH - GPS.		MALSR	MISSED APPROACH: Climb to 1400 then climbing left turn to 3100 direct SLUGG and hold.
<p>⚠ Circling NA west of Rwy 18R-36L. For uncompensated Baro-VNAV systems, LNAV/VNAV NA below -16°C or above 54°C. For inop ALS, increase LNAV/VNAV all Cats visibility to 1$\frac{1}{2}$ SM and increase LNAV Cats C/D visibility to 1$\frac{3}{8}$ SM.</p>			

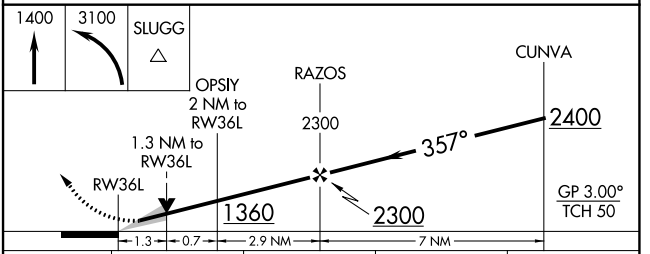
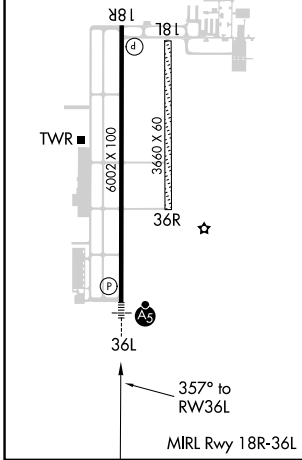
ATIS 120.025	REGIONAL APP CON 135.975 379.9	SPINKS TOWER ★ 124.625 (CTAF)	GND CON 119.475	UNICOM 122.7
------------------------	------------------------------------------	-----------------------------------------	---------------------------	------------------------



SC-2, 11 JUL 2024 to 08 AUG 2024

SC-2, 11 JUL 2024 to 08 AUG 2024

ELEV 700	TDZE 697
----------	----------



CATEGORY	A	B	C	D
LPV DA	897- $\frac{1}{2}$		200 (200- $\frac{1}{2}$)	
LNAV/VNAV DA	1193-1		496 (500-1)	
LNAV MDA	1160- $\frac{1}{2}$	463 (500- $\frac{1}{2}$)	1160-1	463 (500-1)
CIRCLING	1200-1	500 (500-1)	1340-1 $\frac{3}{4}$ 640 (700-1 $\frac{3}{4}$)	1340-2 640 (700-2)