

LOC/DME I-SRR <b>110.7</b> Chan 44	APP CRS <b>241°</b>	Rwy Idg <b>8120</b> TDZE <b>6771</b> Apt Elev <b>6814</b>
------------------------------------------	------------------------	-----------------------------------------------------------------

# ILS or LOC RWY 24

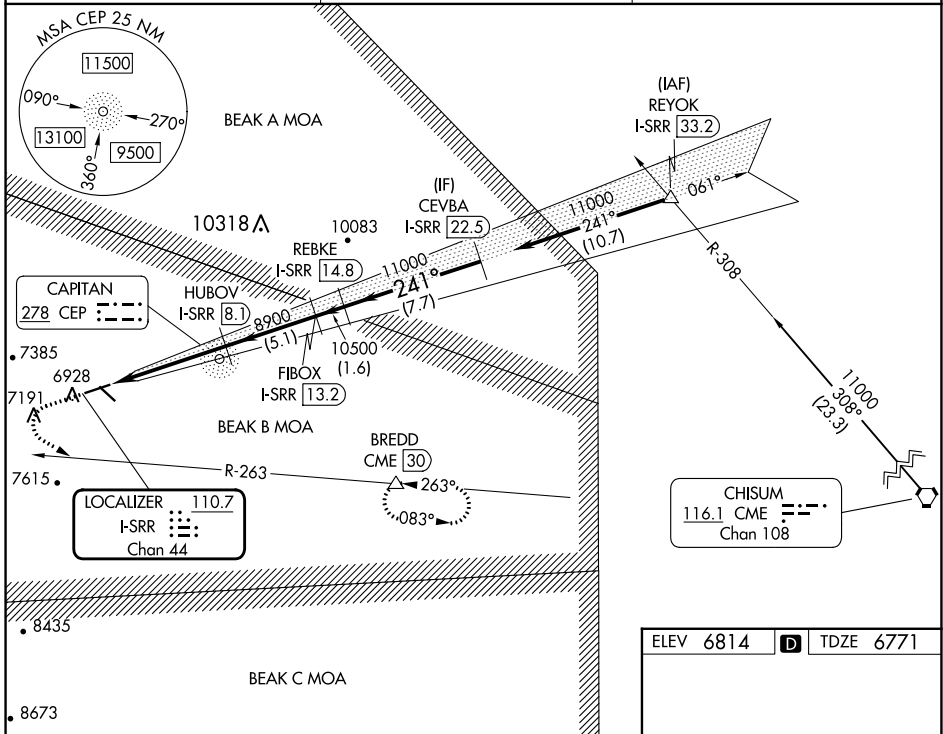
SIERRA BLANCA RGNL (SR.R)

DME required.

**NA** Autopilot coupled approach NA below 7200. Circling Rwy 12 NA at night. When local altimeter setting not received, procedure NA.

**MISSED APPROACH:** Climb to 7500 then climbing left turn to 11000 on heading 110° and on COME VORTAC R-263 to BREDD/CME 30 DME and hold, continue climb-in-hold to 11000.

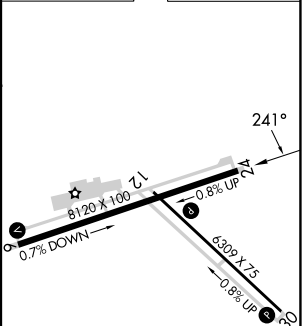
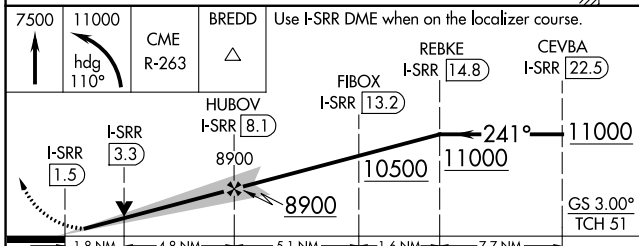
AWOS-3 <b>126.475</b>	ALBUQUERQUE CENTER <b>132.65 257.6</b>	UNICOM <b>122.8 (CTAF)</b>
--------------------------	-------------------------------------------	-------------------------------



SW-1, 11 JUL 2024 to 08 AUG 2024

SW-1, 11 JUL 2024 to 08 AUG 2024

ELEV 6814	<b>D</b>	TDZE 6771
-----------	----------	-----------



CATEGORY	A	B	C	D
S-ILS 24	6974-3/4		203 (200-3/4)	
S-LOC 24	7340-1	569 (600-1)	7340-1 5/8	569 (600-1 5/8)
CIRCLING	7340-1	526 (600-1)	7600-2 1/4 786 (800-2 1/4)	7860-3 1046 (1100-3)

REIL Rwy 12 and 30	<b>1</b>
MIRL Rwy 6-24 and 12-30	<b>1</b>
FAF to MAP 6.6 NM	
Knots	60 90 120 150 180
Min:Sec	6:36 4:24 3:18 2:38 2:12