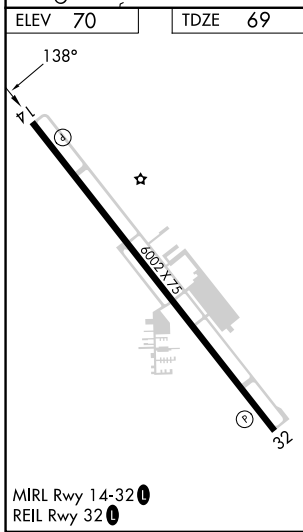
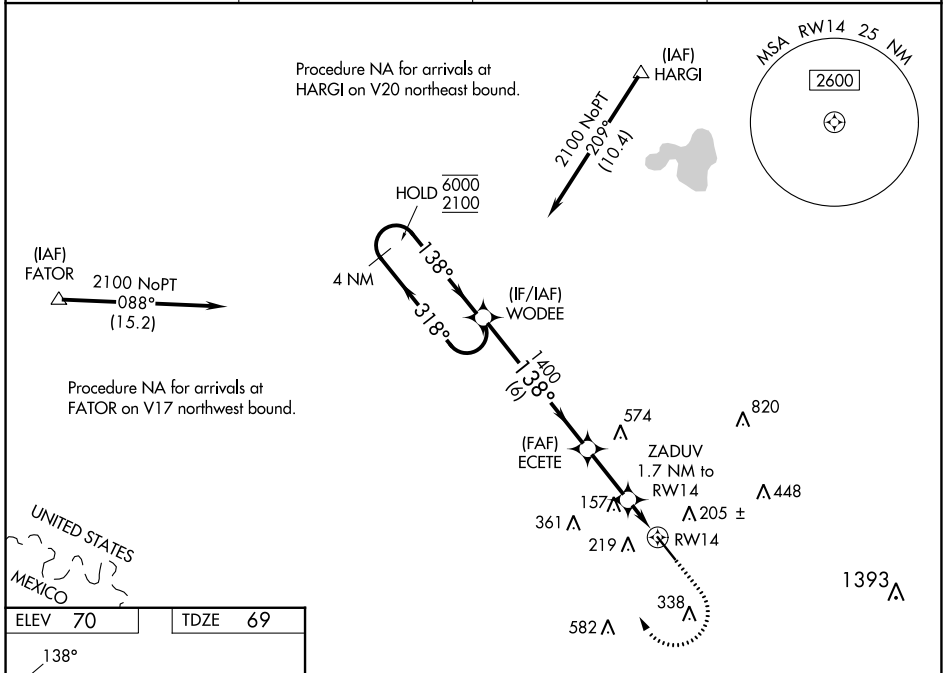


WAAS CH <b>70341</b> <b>W14A</b>	APP CRS <b>138°</b>	Rwy Idg TDZE Apt Elev	<b>6002</b> <b>69</b> <b>70</b>
--	------------------------	-----------------------------	---------------------------------------

# RNAV (GPS) RWY 14

MID VALLEY (TXW)

RNP APCH.		MISSED APPROACH: Climb to 900 then climbing right turn to 2100 direct WODEE and hold.	
AWOS-3PT <b>118.575</b>	VALLEY APP CON <b>126.55 377.2</b>	CLNC DEL <b>125.95</b>	UNICOM <b>122.8 (CTAF)</b>



4 NM Holding Pattern	WODEE	900	2100	WODEE
6000 2100	← 318° →	↑	↷	✦
GP 3.00° TCH 50	1400	ZADUV 1.7 NM to RW14	*0.9 NM to RW14	*LNAV only.
	← 6 NM →	← 2.3 NM →	← 0.8 NM →	← 0.9 NM →
CATEGORY	A	B	C	D
LPV DA		319- <sup>3</sup> / <sub>4</sub>	250 (300- <sup>3</sup> / <sub>4</sub> )	
LNAV/VNAV DA		331- <sup>7</sup> / <sub>8</sub>	262 (300- <sup>7</sup> / <sub>8</sub> )	
LNAV MDA		420-1	351 (400-1)	
<input checked="" type="checkbox"/> CIRCLING	620-1	550 (600-1)	700-1 <sup>3</sup> / <sub>4</sub> 630 (700-1 <sup>3</sup> / <sub>4</sub> )	940-2 <sup>3</sup> / <sub>4</sub> 870 (900-2 <sup>3</sup> / <sub>4</sub> )

SC-3, 11 JUL 2024 to 08 AUG 2024

SC-3, 11 JUL 2024 to 08 AUG 2024