

WAAS CH <b>78135</b> <b>W18A</b>	APP CRS <b>179°</b>	Rwy Idg TDZE Apt Elev	<b>6000</b> <b>1350</b> <b>1350</b>
----------------------------------------	------------------------	-----------------------------	-------------------------------------------

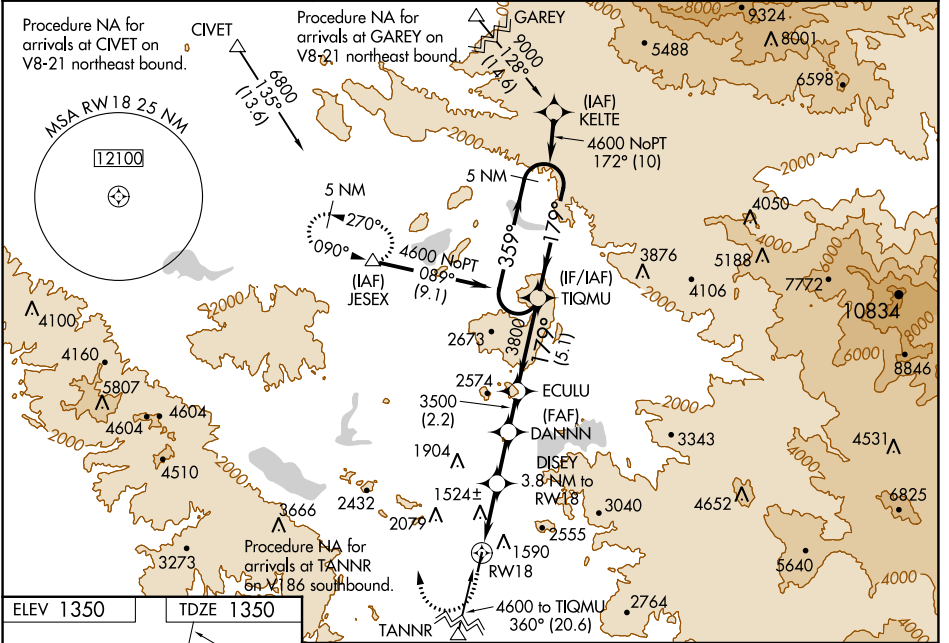
# RNAV (GPS) RWY 18

FRENCH VALLEY (F70)

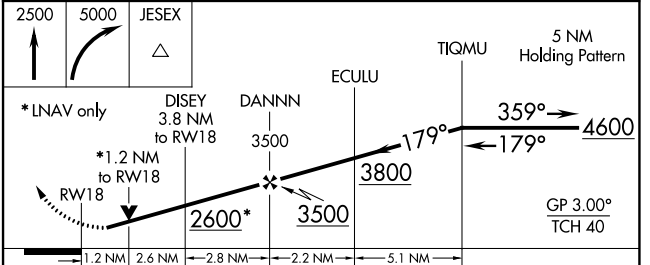
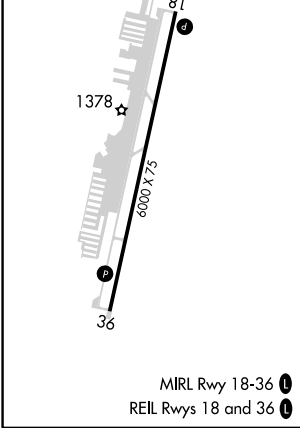
**NA** DME/DME RNP-0.3 NA. Baro-VNAV and VDP NA with Ramona altimeter setting. Circling NA west of Rwy 18-36. For uncompensated Baro-VNAV systems, LNAV/VNAV NA below -17°C (2°F) or above 54°C (130°F). When local altimeter setting not received use Ramona altimeter setting: increase LPV DA to 1685 feet and all visibilities ¼ mile, LNAV/VNAV DA to 1955 feet and all visibilities ¾ mile, all MDA 80 feet and LNAV visibility Cat B ¼ mile, Cat C ⅓ mile, and Circling visibility Cat C ¼ mile. Helicopter visibility reduction below ¾ SM NA.

**MISSED APPROACH:** Climb to 2500 then climbing right turn to 5000 direct JESEX and hold.

AWOS-3 <b>119.025</b>	MARCH APP CON* <b>133.5 306.975</b>	UNICOM <b>122.8 (CTAF)</b>
--------------------------	----------------------------------------	-------------------------------



ELEV 1350	TDZE 1350
-----------	-----------



CATEGORY	A	B	C	D
LPV DA	1600-7/8	250 (300-7/8)		NA
LNAV/VNAV DA	1871-13/4	521 (600-13/4)		NA
LNAV MDA	1780-1	430 (500-1)	1780-1 1/4 430 (500-1 1/4)	NA
<b>C</b> CIRCLING	2020-1	670 (700-1)	2060-2 710 (800-2)	NA