

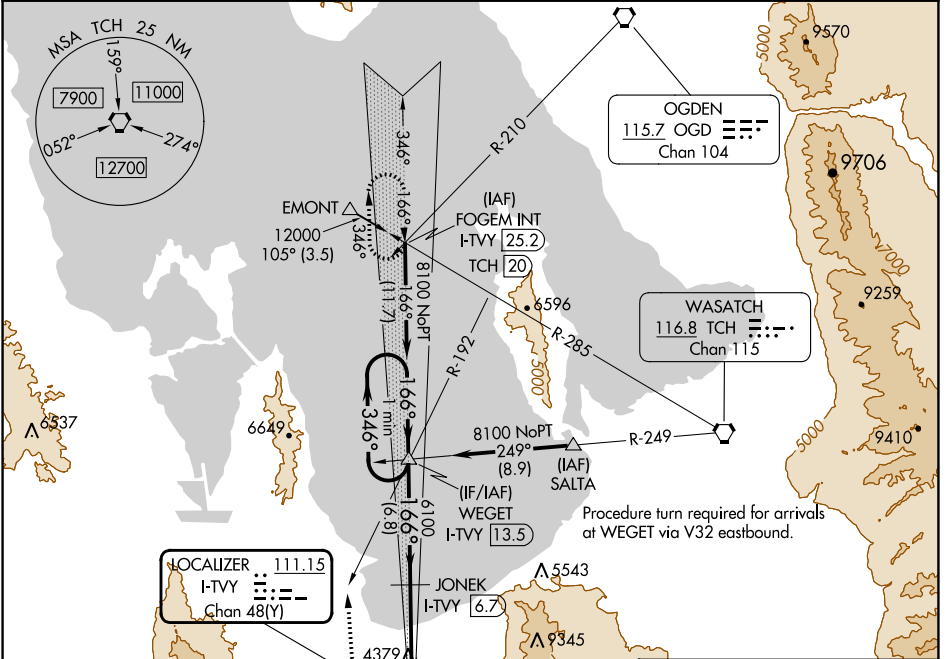
LOC/DME I-TVY <b>111.15</b> Chan 48(Y)	APP CRS <b>166°</b>	Rwy Idg TDZE Apt Elev	<b>6102</b> <b>4297</b> <b>4322</b>
--	------------------------	-----------------------------	---

# ILS or LOC RWY 17

BOLINDER FIELD-TOOELE VALLEY (TVY)

<b>⚠</b> DME required. For inop ALS, increase S-LOC Cat C/D visibility to 1 SM.	MALSR 	MISSED APPROACH: Climb to 5400 then climbing right turn to 8600 heading 343° and OGD VORTAC R-192 to WEGET INT/I-TVY 13.5 DME and I-TVY north course to FOGEM INT/I-TVY 25.2 DME and hold.
--	-----------	--

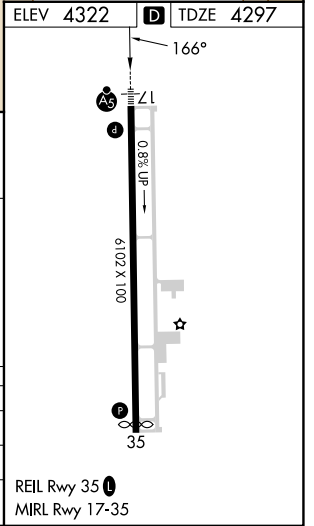
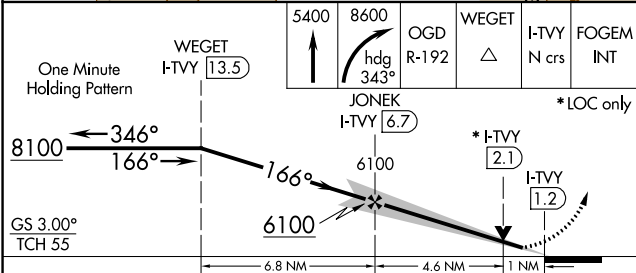
AWOS-3 <b>119.725</b>	SALT LAKE CITY APP CON <b>135.5 316.15</b>	CLNC DEL <b>124.4</b>	UNICOM <b>123.0 (CTAF)</b>
--------------------------	---	--------------------------	-------------------------------



SW-4, 11 JUL 2024 to 08 AUG 2024

SW-4, 11 JUL 2024 to 08 AUG 2024

ELEV 4322	<b>D</b> TDZE 4297
-----------	--------------------



CATEGORY	A	B	C	D
S-ILS 17	4497-1/2		200 (200-1/2)	
S-LOC 17	4640-1/2	343 (400-1/2)	4640-5/8	343 (400-5/8)
<b>C</b> CIRCLING	4820-1 498 (500-1)	4900-1 578 (600-1)	5060-2 738 (800-2)	5380-3 1058 (1100-3)