

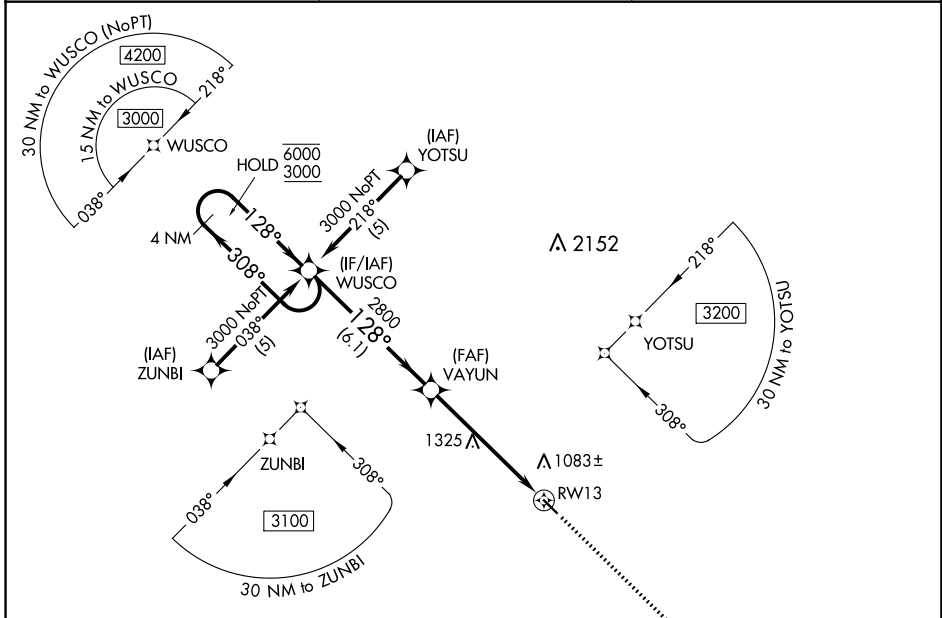
APP CRS	Rwy Idg	<b>3901</b>
<b>128°</b>	TDZE	<b>933</b>
	Apt Elev	<b>933</b>

# RNAV (GPS) RWY 13

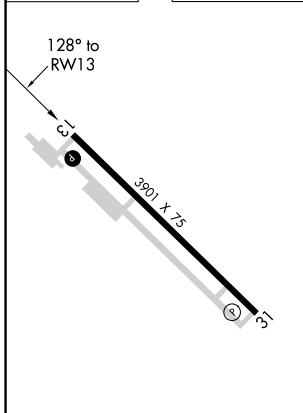
CASSELTON ROBERT MILLER RGNL (5N8)

RNP APCH.	Rwy 13 helicopter visibility reduction below 3/4 SM NA. Use Fargo altimeter setting; when not received use Morehead altimeter setting and increase all MDA 20 feet.	MISSED APPROACH: Climb to 3000 direct JINPU and hold.
FAR ASOS <b>124.5 379.2</b>		

FAR ASOS <b>124.5 379.2</b>	FARGO APP CON <b>120.4 377.15</b>	UNICOM <b>122.8 (CTAF) 1</b>
--------------------------------	--------------------------------------	---------------------------------



ELEV 933	TDZE 933
----------	----------



REIL Rwy 31 1	MIRL Rwy 13-31 1
---------------	------------------

4 NM Holding Pattern WUSCO VGSI and descent angles not coincident (VGSI Angle 3.00/TCH 21).				3000	JINPU
6000 ← 308° 3000 → 128°				↑ ✦	✦
VAYUN 2800 3.05° TCH 40					
6.1 NM		5.7 NM			
CATEGORY	A	B	C	D	
LNAV MDA	1620-1	687 (700-1)	1620-2 687 (700-2)	NA	

NC-1, 11 JUL 2024 to 08 AUG 2024

NC-1, 11 JUL 2024 to 08 AUG 2024