

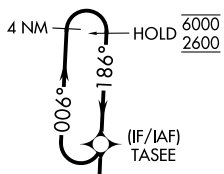
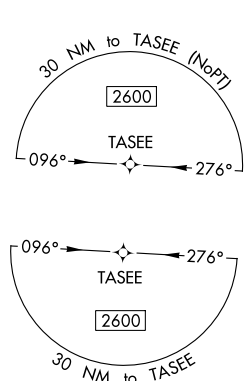
APP CRS	Rwy Idg	<b>5009</b>
<b>186°</b>	TDZE	<b>357</b>
	Apt Elev	<b>357</b>

# RNAV (GPS) RWY 19

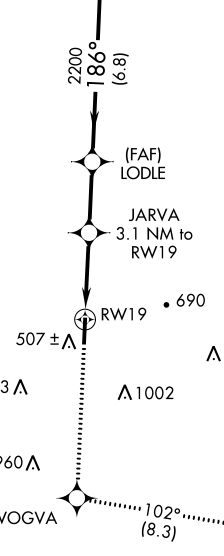
RICHARD ARTHUR FLD (M95)

RNP APCH.	<p>Procedure NA at night. Rwy 19 helicopter visibility reduction below 1 SM NA. Use Jasper altimeter setting.</p>	<p>MISSED APPROACH: Climb to 2600 direct WOGVA and on track 102° to BESOM and hold.</p>
-----------	---	---

JFX AWOS-3PT <b>119.225</b>	COLUMBUS APP CON ★ <b>126.075 239.25</b>	UNICOM <b>122.8 (CTAF)</b>
--------------------------------	---	-------------------------------



▲1167



SE-4, 11 JUL 2024 to 08 AUG 2024

SE-4, 11 JUL 2024 to 08 AUG 2024

ELEV 357	TDZE 357
----------	----------

MIRL Rwy 1-19

2600	WOGVA	tr 102°	BESOM	Visual Segment - Obstacles.	4 NM Holding Pattern
				TASEE	
	RWY 19	JARVA 3.1 NM to RWY 19	LODLE	186°	006° → 6000
		1380	2200	← 186°	2600
		3.1 NM	2.6 NM	6.8 NM	
CATEGORY	A	B	C	D	
LNAV MDA	1080-1	723 (800-1)	1080-2	723 (800-2)	