

WAAS CH 77742 W18A	APP CRS 182°	Rwy Idg TDZE Apt Elev	4300 1599 1607
--	------------------------	-----------------------------	---

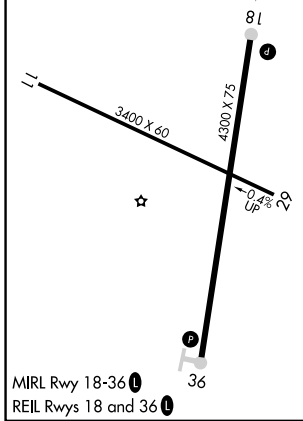
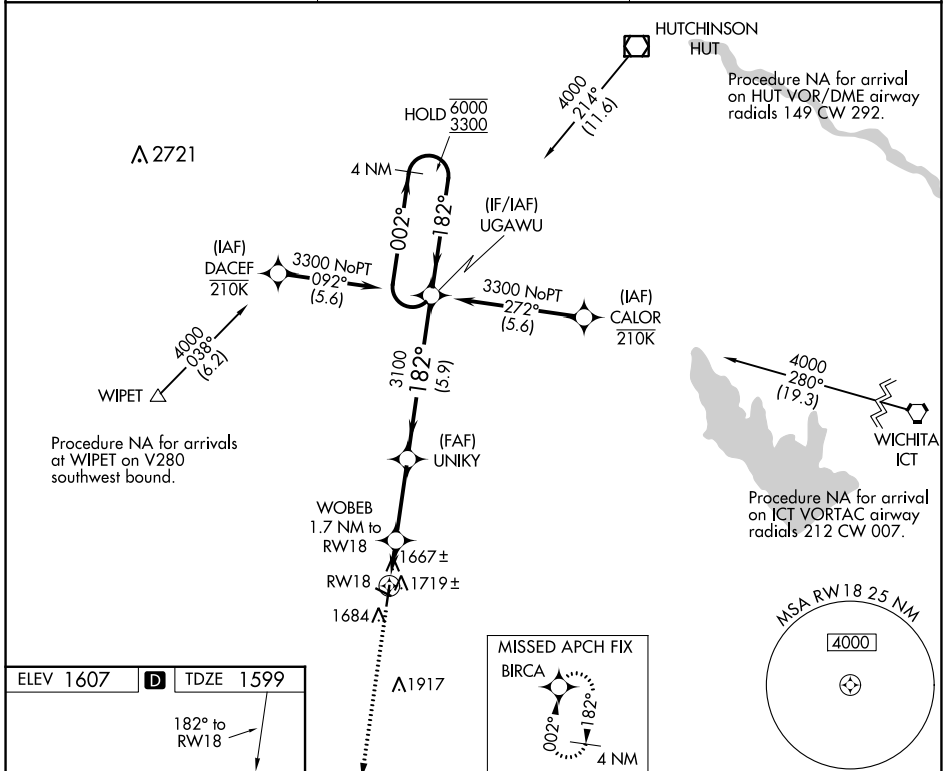
RNAV (GPS) RWY 18

KINGMAN/CLYDE CESSNA FLD (9K8)

RNP APCH. MISSED APPROACH: Climb to 3600 direct BIRCA and hold.

▼ Rwy 18 helicopter visibility reduction below 3/4 SM NA. Circling Rwy 11, 29 NA at night.

AWOS-3PT 119.325	WICHITA APP CON 125.5 306.2	UNICOM 122.8 (CTAF) 0
----------------------------	---------------------------------------	--



3600	BIRCA	VGSI and descent angles not coincident (VGSI Angle 3.00/TCH 43).		4 NM Holding Pattern
UNIKY	WOBEB 1.7 NM to RWY 18	UNIKY	UNIKY	UGAWU
0.9 NM to RWY 18	0.8 NM to RWY 18	3 NM	5.9 NM	
3100	2160	3100	3100	6000 3300
0.9	0.8	3 NM	5.9 NM	
CATEGORY	A	B	C	D
LP MDA	1920-1 321 (400-1)			NA
LNAV MDA	1980-1 381 (400-1)	1980-1 1/8 381 (400-1 1/8)		NA
CIRCLING	2040-1 433 (500-1)	2060-1 453 (500-1)	2160-1 1/2 553 (600-1 1/2)	NA

NC-2, 11 JUL 2024 to 08 AUG 2024

NC-2, 11 JUL 2024 to 08 AUG 2024