

APP CRS 328°	Rwy Idg TDZE Apt Elev	N/A N/A 30
------------------------	-----------------------------	---------------------------------------

RNAV (GPS)-A

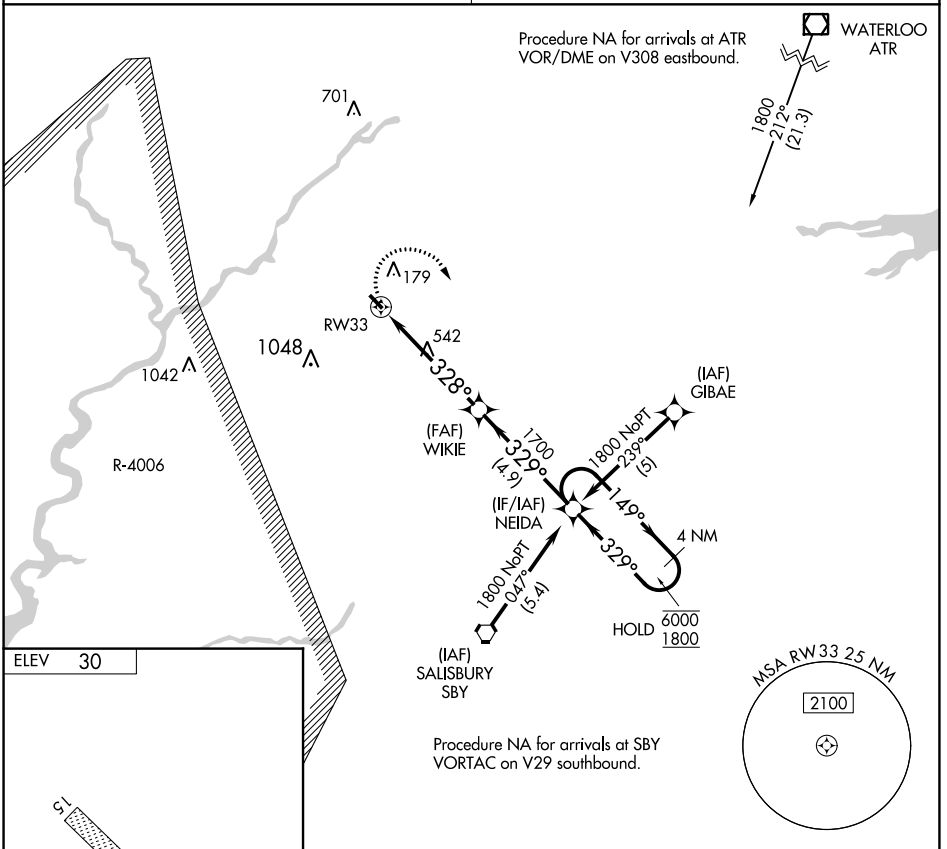
LAUREL (N06)

RNP APCH. Procedure NA at night. Use Salisbury altimeter setting; when not received, use Georgetown altimeter setting.

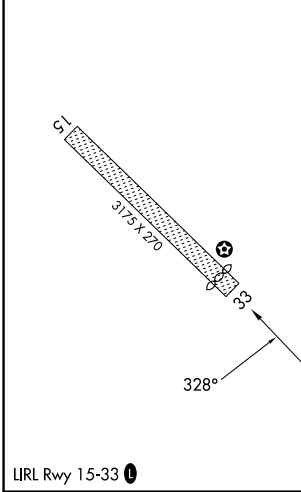
MISSED APPROACH: Climbing right turn to 1800 direct NEIDA and hold.

PATUXENT APP CON* **127.95 314.0**

UNICOM **122.8 (CTAF) 0**



ELEV 30



LIRL Rwy 15-33 0

1800	NEIDA	Visual Segment - Obstacles.		4 NM Holding Pattern
		NEIDA		
RW33		WIKIE	NEIDA	
328°		329°	149°	6000
5.1 NM		4.9 NM	1800	
CATEGORY	A	B	C	D
CIRCLING	880-1¼	850 (900-1¼)	NA	

NE-3, 11 JUL 2024 to 08 AUG 2024

NE-3, 11 JUL 2024 to 08 AUG 2024