

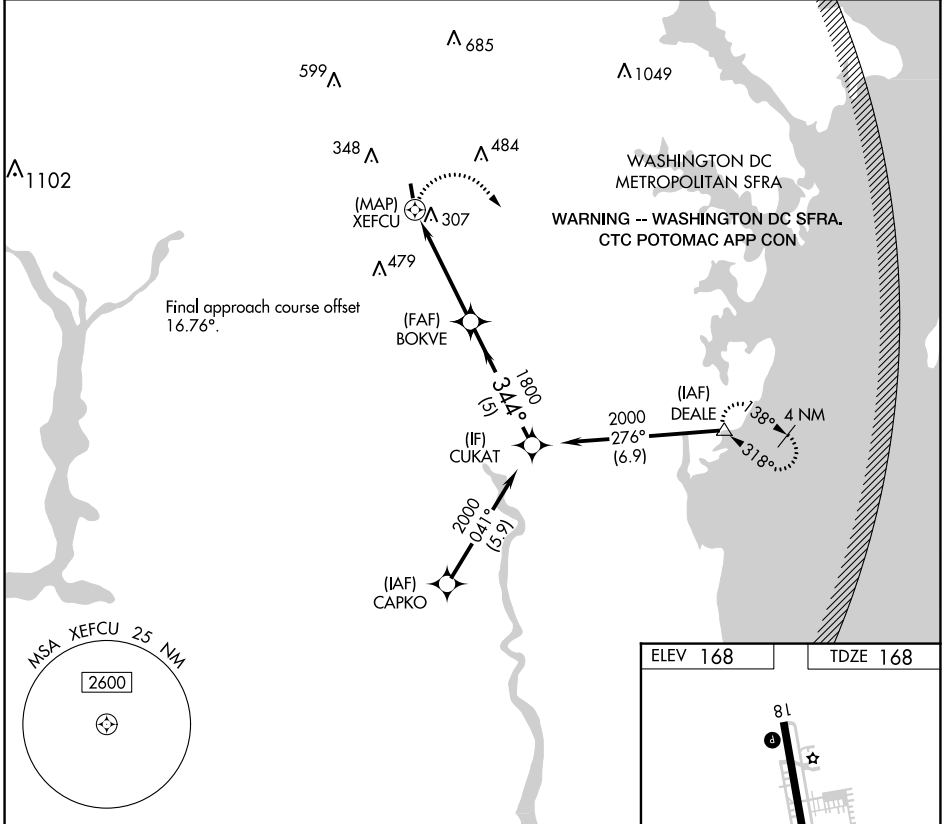
APP CRS	Rwy Idg	<b>2190</b>
<b>344°</b>	TDZE	<b>168</b>
	Apt Elev	<b>168</b>

# RNAV (GPS) RWY 36

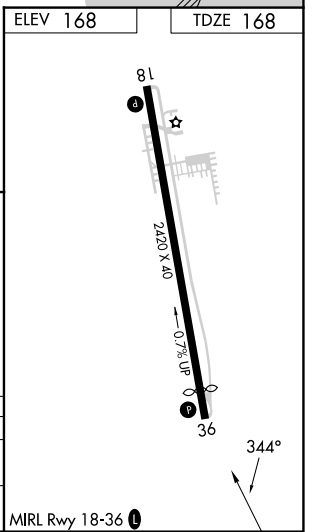
FREEWAY (W00)

RNP APCH.	Procedure NA at night. Rwy 36 helicopter visibility reduction below 1 SM NA. Use Fort Meade (Odenton) altimeter setting; when not received, use College Park altimeter setting and increase all MDAs 20 feet.	MISSED APPROACH: Climbing right turn to 2000 direct DEALE and hold.
-----------	---	---

FME AWOS-3 <b>123.925</b>	POTOMAC APP CON <b>128.0 335.5</b>	UNICOM <b>123.075 (CTAF) 0</b>
------------------------------	---------------------------------------	-----------------------------------



2000	DEALE	Visual Segment-Obstacles.	CUKAT
	△		
	XEFUCU	BOKVE	2000
		1800	
	0.5	4.5 NM	5 NM
CATEGORY	A	B	C
LNVA MDA	700-1	532 (600-1)	NA
CIRCLING	700-1 532 (600-1)	760-1 592 (600-1)	NA



NE-3, 11 JUL 2024 to 08 AUG 2024

NE-3, 11 JUL 2024 to 08 AUG 2024