

TITUSVILLE, FLORIDA

AL-8000 (FAA)

24193

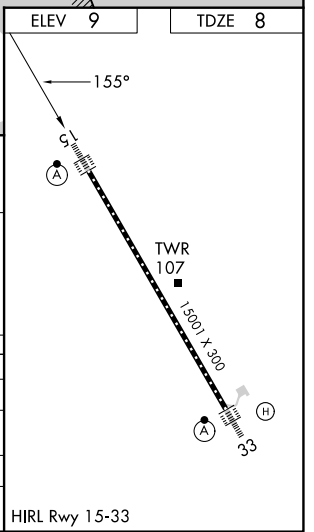
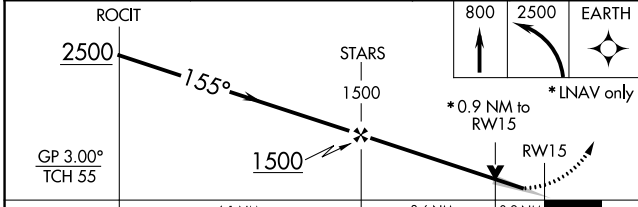
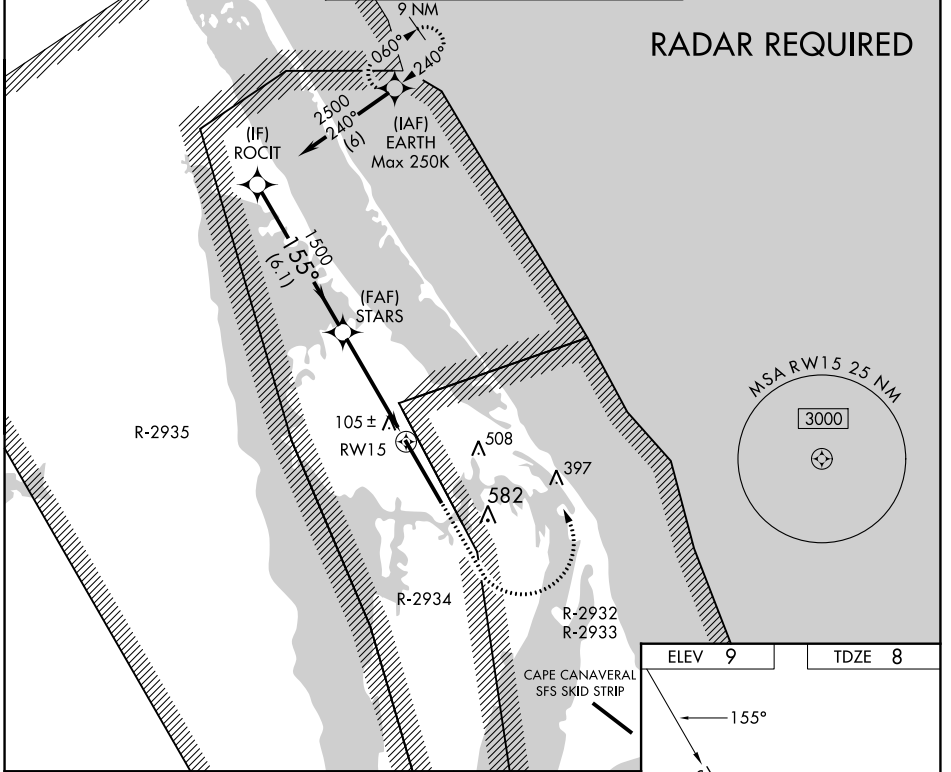
WAAS CH 50534 W15A	APP CRS 155°	Rwy Idg 15001 TDZE 8 Apt Elev 9
----------------------------------------	------------------------	------------------------------------------------------------

RNAV (GPS) RWY 15

SPACE FLORIDA LAUNCH AND LANDING FACILITY (TTS)

<p>For uncompensated Baro-VNAV systems, LNAV/VNAV NA below -15°C (5°F) or above 54°C (130°F). DME/DME RNP-0.3 NA. Inop table does not apply.</p>	ALS-2	MISSED APPROACH: Climb to 800, then climbing left turn to 2500 direct EARTH and hold.

ORLANDO APP CON 134.95 281.425	NASA TOWER ★ 128.55 (CTAF) 284.0	GND CON 121.75
------------------------------------------	--------------------------------------------	--------------------------



CATEGORY	A	B	C	D	E
LPV DA		208-1	200 (200-1)		
LNAV/VNAV DA		286-1	278 (300-1)		
LNAV MDA		360-1	352 (400-1)		
CIRCLING	420-1 411 (500-1)	460-1 451 (500-1)	940-2¾ 931 (1000-2¾)	940-3	931 (1000-3)

TITUSVILLE, FLORIDA
Amdt 1A 25MAY17

SPACE FLORIDA LAUNCH AND LANDING FACILITY (TTS)
28°37'N-80°42'W
RNAV (GPS) RWY 15

SE-3, 11 JUL 2024 to 08 AUG 2024

SE-3, 11 JUL 2024 to 08 AUG 2024