

VORTAC EAU	APP CRS	Rwy Idg	5074
113.65	265°	TDZE	894
Chan 83 (Y)		Apt Elev	895

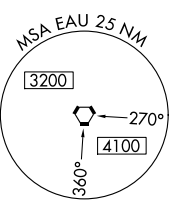
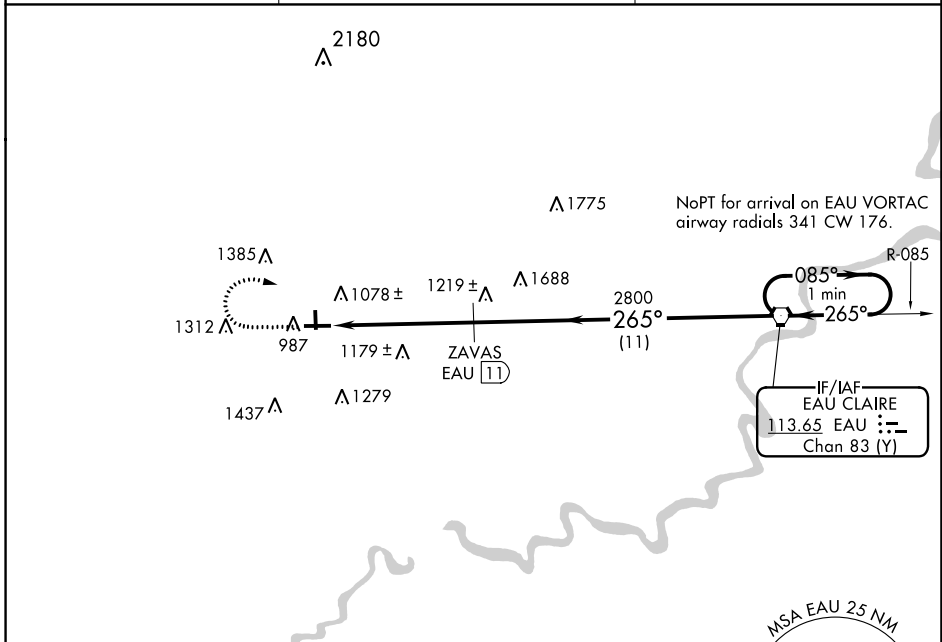
# VOR/DME RWY 27

MENOMONIE MUNI/SCORE FLD (LUM)

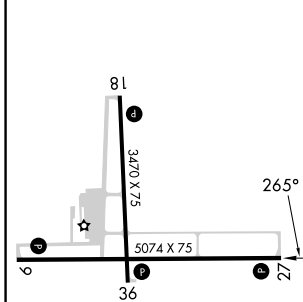
**⚠** When local altimeter setting not received, use Chippewa Valley Rgnl altimeter setting and increase all MDA 60 feet, increase Circling Cat B and C visibility ¼ SM. VDP NA when using Chippewa Valley Rgnl altimeter setting. Rwy 27 helicopter visibility reduction below ¾ SM NA.

**MISSED APPROACH:** Climb to 2000 then climbing right turn to 2800 direct EAU VORTAC and hold.

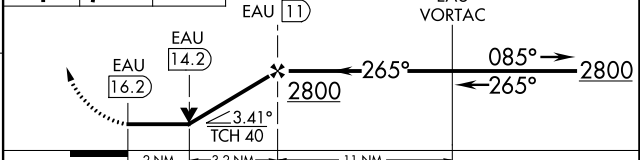
AWOS-3 <b>118.025</b>	MINNEAPOLIS CENTER <b>125.3 335.6</b>	UNICOM <b>122.7 (CTAF) 0</b>
--------------------------	--	---------------------------------



ELEV 895	TDZE 894
----------	----------



2000 2800 EAU VGSI and descent angles not coincident (VGSI Angle 3.00/TCH 45). One Minute Holding Pattern



CATEGORY	A	B	C	D
S-27	1560-1	666 (700-1)	1560-1¾ 666 (700-1¾)	NA
<b>C</b> CIRCLING	1560-1 665 (700-1)	1800-1¼ 905 (1000-1¼)	1820-2¾ 925 (1000-2¾)	NA

REIL Rws 9 and 27  
MIRL Rws 9-27 and 18-36

EC-3, 11 JUL 2024 to 08 AUG 2024

EC-3, 11 JUL 2024 to 08 AUG 2024