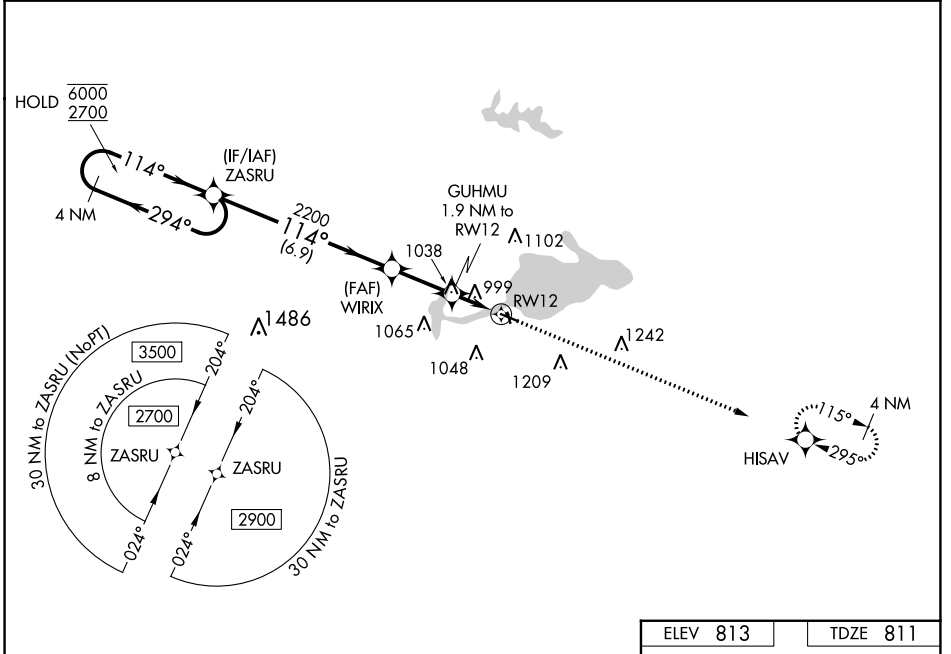


WAAS CH 86429 W12A	APP CRS 114°	Rwy Idg TDZE Apt Elev	3901 811 813
--	------------------------	-----------------------------	---

RNAV (GPS) RWY 12

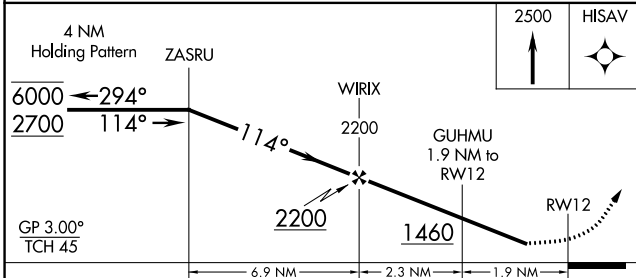
SHAWANO MUNI (E/ZS)

RNP APCH - GPS.		MISSED APPROACH: Climb to 2500 direct HISAV and hold.
<p>▼ Rwy 12 helicopter visibility reduction below 1 SM NA. For uncompensated Baro-VNAV systems, LNAV/VNAV NA below -16°C or above 54°C. Straight-in Rwy 12 and Circling Rwy 12, 35 NA at night.</p> <p>▲</p>		
AWOS-3 118.65	GREEN BAY APP CON ★ 119.4 338.2	UNICOM 122.8 (CTAF) 0



EC-3, 11 JUL 2024 to 08 AUG 2024

EC-3, 11 JUL 2024 to 08 AUG 2024



ELEV 813	TDZE 811
2500	HISAV
<p>WATER ALL-WAY: 12000 X 1000</p> <p>MIRL Rwy 12-30 and 17-35 0 REIL Rwy 30 0</p>	

CATEGORY	A	B	C	D
LPV DA	1082-1		271 (300-1)	
LNAV/VNAV DA	1378-1 ⁵ / ₈		567 (600-1 ⁵ / ₈)	
LNAV MDA	1300-1	489 (500-1)	1300-1 ³ / ₈	489 (500-1 ³ / ₈)
C CIRCLING	1340-1 527 (600-1)	1440-1 627 (700-1)	1680-2 ¹ / ₂ 867 (900-2 ¹ / ₂)	1680-2 ³ / ₄ 867 (900-2 ³ / ₄)