

WAAS CH 93924 W36A	APP CRS 005°	Rwy Idg 3499 TDZE 246 Apt Elev 247
--	------------------------	---

RNAV (GPS) RWY 36

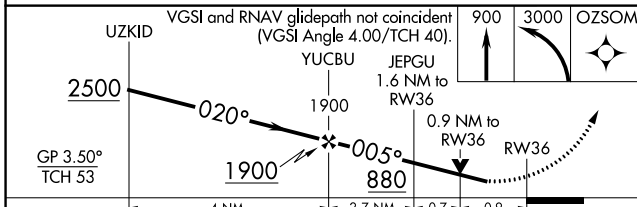
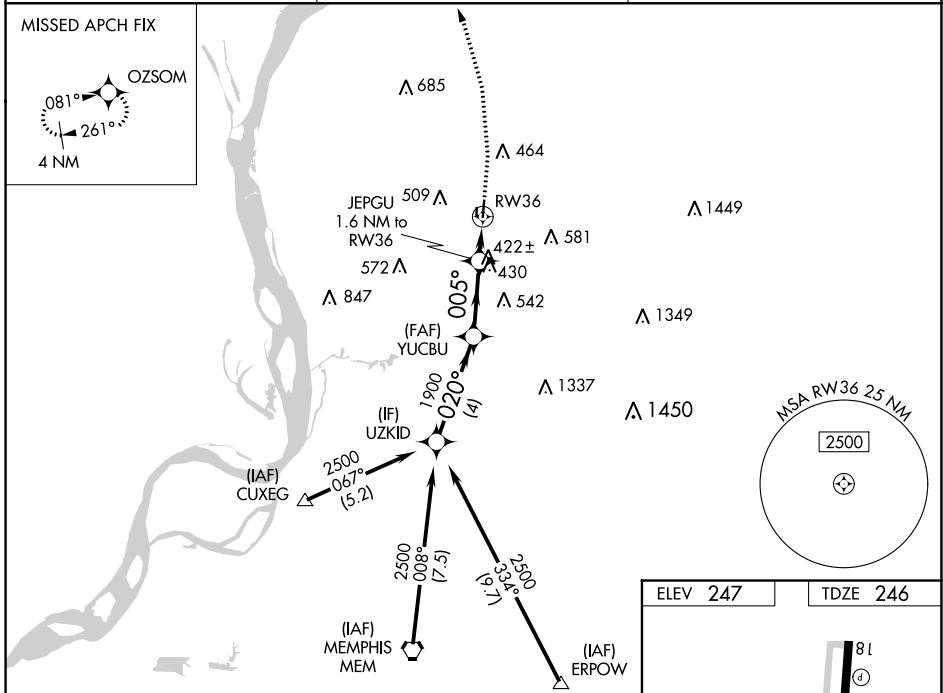
CHARLES W BAKER (2M8)

RNP APCH - GPS.

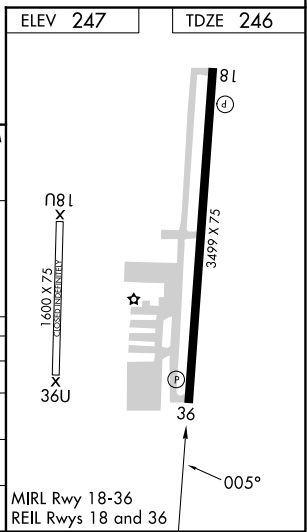
Baro-VNAV and VDP NA when using Millington/Memphis altimeter setting. For uncompensated Baro-VNAV systems, LNAV/VNAV NA below -15°C or above 54°C. Rwy 36 helicopter visibility reduction below ¾ SM NA. Circling Rwy 18 NA at night. When local altimeter setting not received, use Millington/Memphis altimeter setting: increase LPV DA to 643 feet and all visibilities ½ SM; increase LNAV/VNAV DA to 707 feet and all visibilities ½ SM; increase all MDAs 40 feet and LNAV visibility Cat C ½ SM, and Circling visibility Cat C ½ SM.

MISSED APPROACH: Climb to 900 then climbing left turn to 3000 direct OZSOM and hold, continue climb-in-hold to 3000.

AWOS-3PT 119.575	MEMPHIS APP CON 125.8 338.3	UNICOM 122.8 (CTAF)
----------------------------	---------------------------------------	-------------------------------



CATEGORY	A	B	C	D
LPV DA	619-1	373 (400-1)		NA
LNAV/VNAV DA	683-1¼	437 (500-1¼)		NA
LNAV MDA	680-1	434 (500-1)	680-1¼ 434 (500-1¼)	NA
CIRCLING	760-1 513 (600-1)	860-1 613 (700-1)	900-1¼ 653 (700-1¼)	NA



SE-1, 11 JUL 2024 to 08 AUG 2024

SE-1, 11 JUL 2024 to 08 AUG 2024