

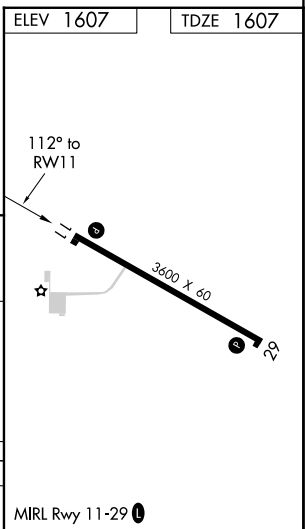
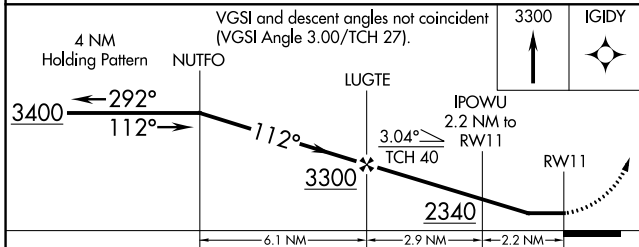
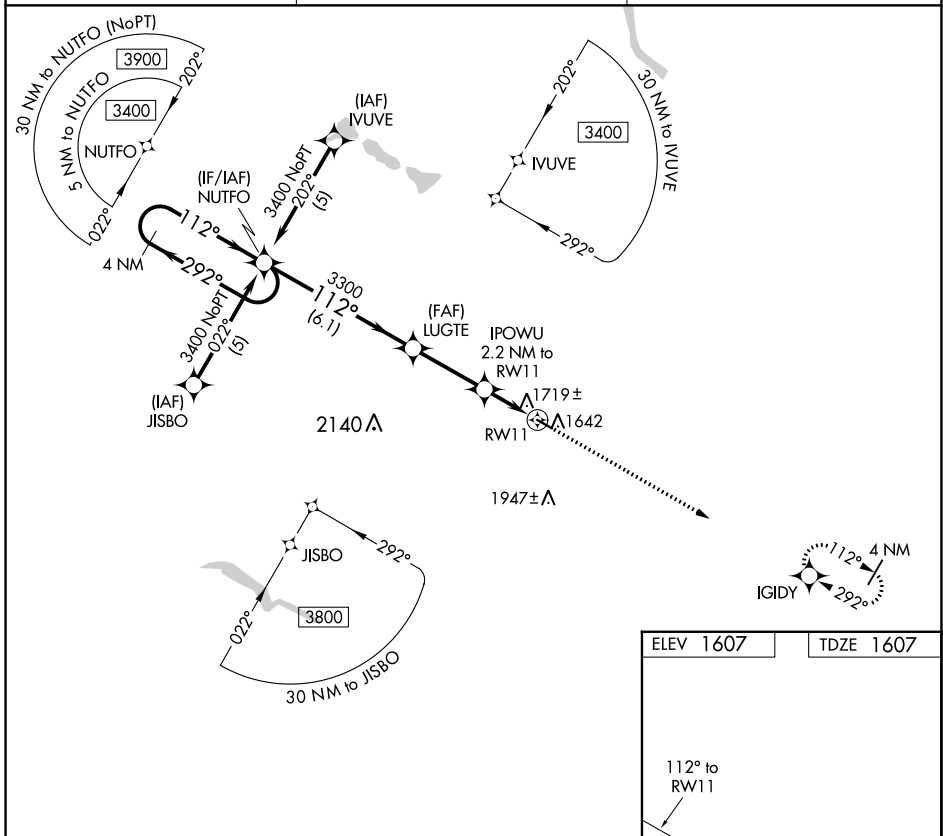
APP CRS	Rwy Idg	3600
112°	TDZE	1607
	Apt Elev	1607

RNAV (GPS) RWY 11

HARVEY MUNI (5H4)

RNP APCH.	Procedure NA at night. Rwy 11 helicopter visibility reduction below 1 SM NA. When local altimeter setting not received; use Devil's Lake altimeter setting and increase all MDA 140 feet and LNAV Cat C visibility 1/2 SM.	MISSED APPROACH: Climb to 3300 direct IGIDY and hold.
-----------	--	---

AWOS-3 118.825	MINNEAPOLIS CENTER 135.25 256.7	UNICOM 122.8 (CTAF) 1
--------------------------	---	---------------------------------



CATEGORY	A	B	C	D
LNAV MDA	1980-1	373 (400-1)		NA

NC-1, 11 JUL 2024 to 08 AUG 2024

NC-1, 11 JUL 2024 to 08 AUG 2024