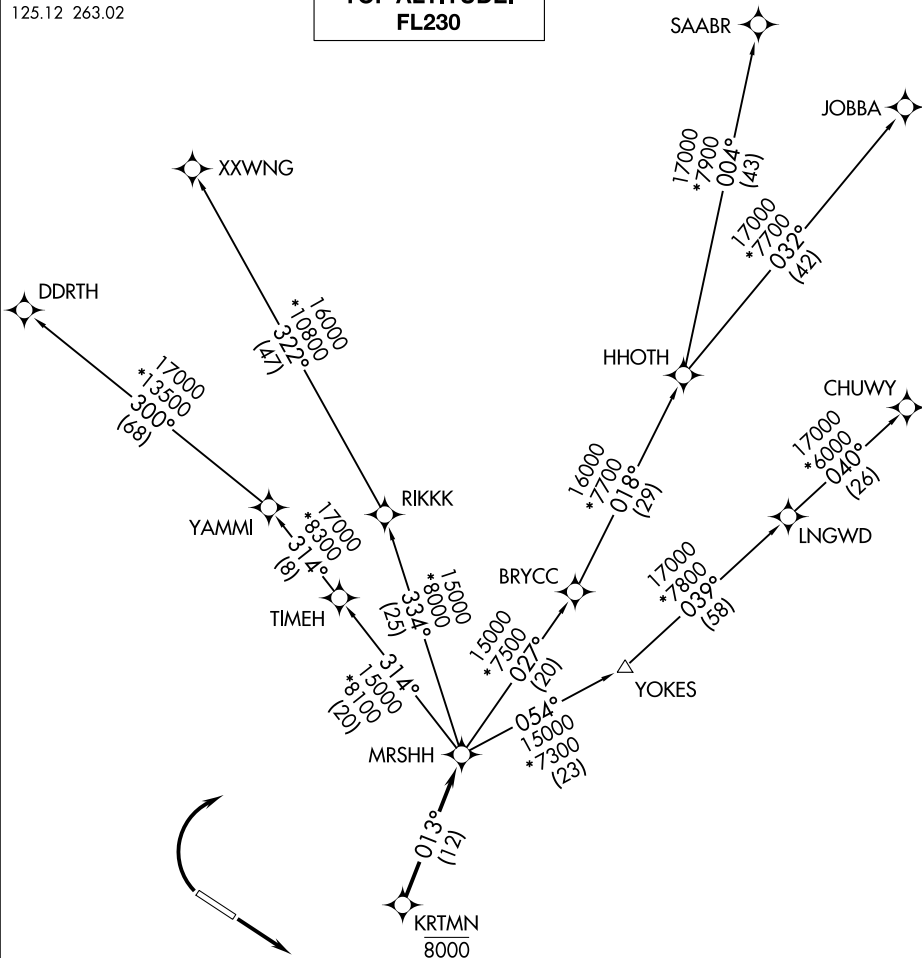


DENVER DEP CON
125.12 263.02

**TOP ALTITUDE:
FL230**



SW-1, 11 JUL 2024 to 08 AUG 2024

SW-1, 11 JUL 2024 to 08 AUG 2024

TAKEOFF MINIMUMS

Rwy 11: Standard.
Rwy 29: Standard with minimum climb of 370' per NM to 8000.

- NOTE: DME/DME/IRU or GPS required.
- NOTE: RNAV 1.
- NOTE: Turbojets only.
- NOTE: RADAR required.

NOTE: Chart not to scale.

(NARRATIVE ON FOLLOWING PAGE)