

APP CRS	Rwy Idg	N/A
346°	TDZE	N/A
	Apt Elev	5055

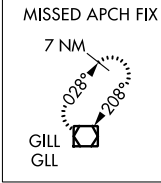
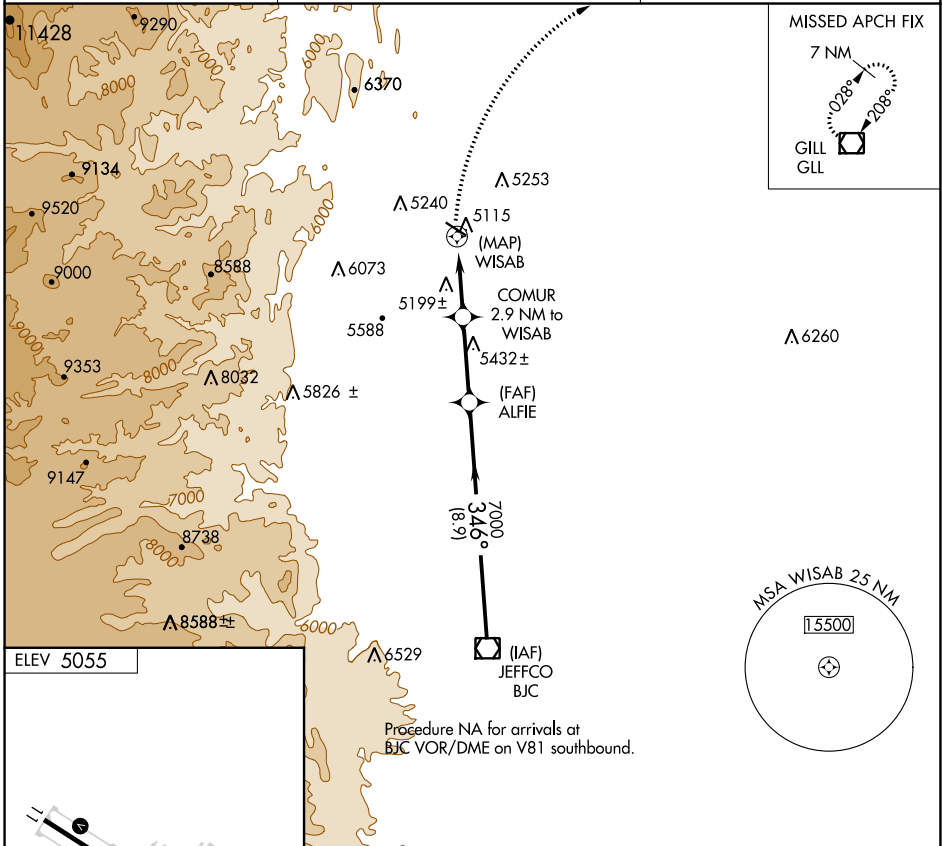
RNAV (GPS)-B

VANCE BRAND (LMO)

⚠ When local altimeter setting not received, use Denver Intl altimeter setting and increase all MDA 120 feet; and increase Cat C/D visibility ¼ mile.
⚠ DME/DME RNP-0.3 NA. Visibility reduction by helicopters NA.

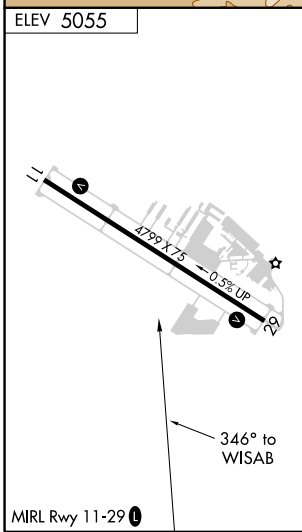
MISSED APPROACH: Climbing right turn to 7200 direct GLL VOR/DME and hold.

AWOS-3 120.0	DENVER APP CON 125.12 263.02	UNICOM 122.975 (CTAF)
------------------------	--	---------------------------------



SW-1, 11 JUL 2024 to 08 AUG 2024

SW-1, 11 JUL 2024 to 08 AUG 2024



7200	GLL	ALFIE	COMUR 2.9 NM to WISAB	WISAB	6020	7000	9200	BIC VOR/DME
					2.9 NM	3.1 NM	8.9 NM	
CATEGORY	A	B	C	D				
CIRCLING	5560-1 505 (600-1)	5580-1 525 (600-1)	5880-2½ 825 (900-2½)	6500-3 1445 (1500-3)				