

APP CRS 130°	Rwy Idg 3900
	TDZE 408
	Apt Elev 412

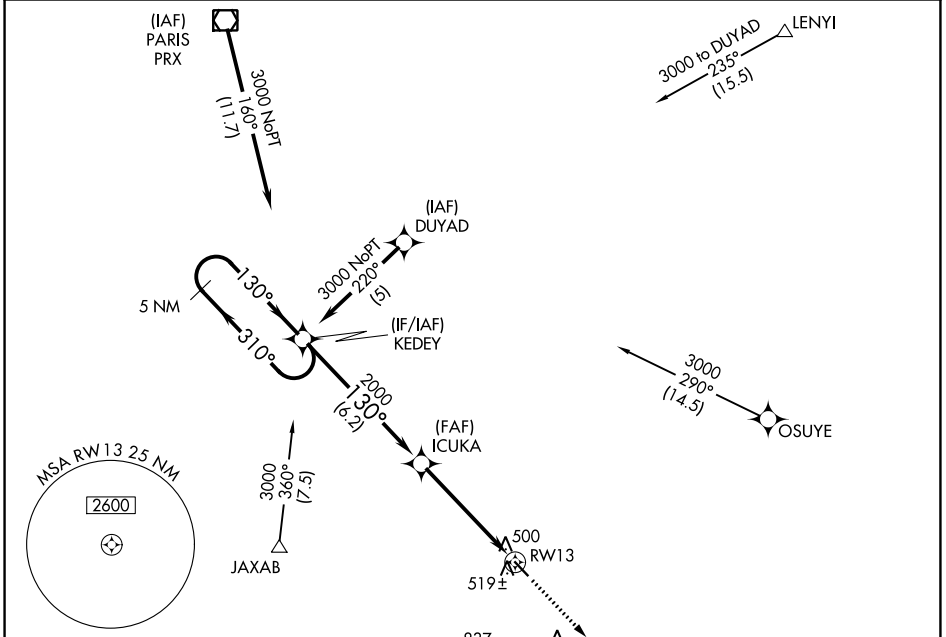
RNAV (GPS) RWY 13

FRANKLIN COUNTY (F53)

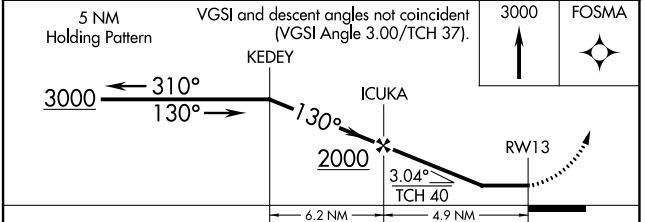
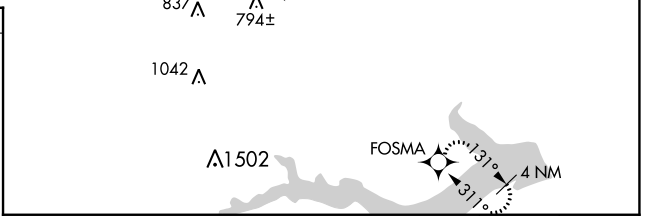
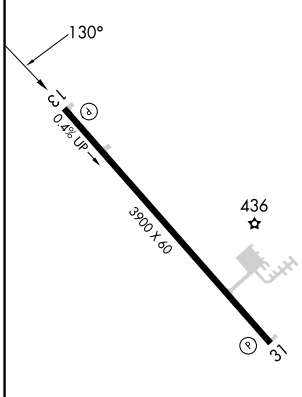
NA DME/DME RNP-0.3 NA. Use Mount Pleasant Rgnl altimeter setting; if not received, procedure NA. Procedure NA at night. Helicopter visibility reduction below 1 SM NA.

MISSED APPROACH: Climb to 3000 direct FOSMA and hold.

OSA AWOS-3 119.775	FORT WORTH CENTER 132.025 360.75	UNICOM 123.0 (CTAF)
------------------------------	--	-------------------------------



ELEV	412	TDZE	408
------	-----	------	-----



CATEGORY	A	B	C	D
LNAV MDA	820-1	412 (500-1)		NA
CIRCLING	940-1 528 (600-1)	980-1 568 (600-1)		NA

SC-2, 11 JUL 2024 to 08 AUG 2024

SC-2, 11 JUL 2024 to 08 AUG 2024