

WAAS CH <b>99746</b> <b>W31A</b>	APP CRS <b>331°</b>	Rwy Idg TDZE Apt Elev	<b>5600</b> <b>4230</b> <b>4234</b>
--	------------------------	-----------------------------	---

# RNAV (GPS) RWY 31

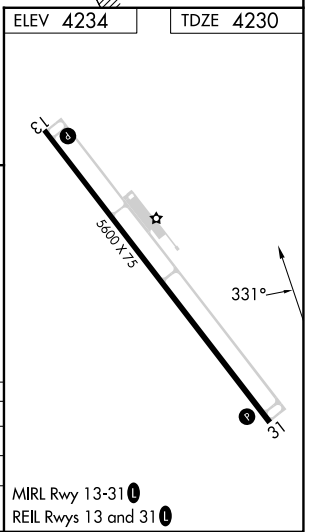
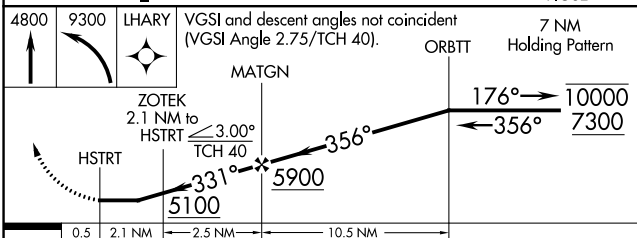
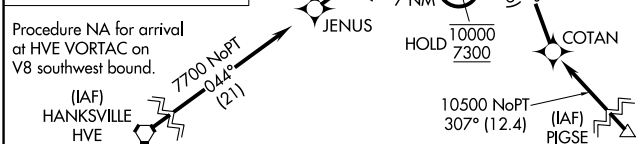
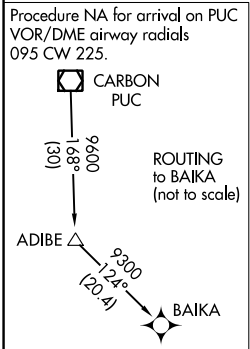
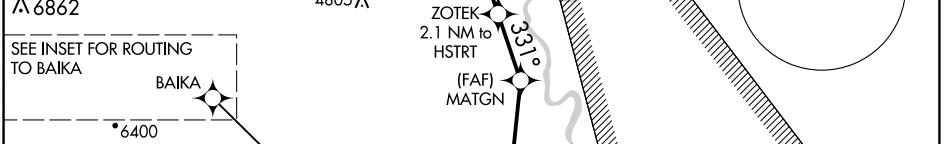
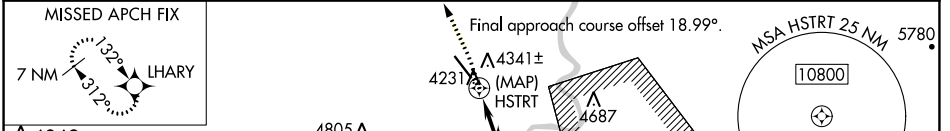
GREEN RIVER MUNI (U34)

RNP APCH - GPS.

**NA** Rwy 31 helicopter visibility reduction below  $\frac{3}{4}$  SM NA. Use Moab altimeter setting; when not received, use Hanksville altimeter setting and increase all MDAs 20 feet and LP visibility Cat C/D  $\frac{1}{2}$  SM, and Circling visibility Cat D  $\frac{1}{2}$  SM. Circling NA for Cats C and D northeast of Rwy 13-31.

MISSED APPROACH: Climb to 4800, then climbing left turn to 9300 direct LHARY and hold, continue climb-in-hold to 9300.

CNY ASOS <b>118.525</b>	SALT LAKE CENTER <b>133.6 269.25</b>	UNICOM <b>122.8 (CTAF)</b>
----------------------------	---	-------------------------------



CATEGORY	A	B	C	D
LP MDA	4640-1	410 (500-1)	4640-1 $\frac{1}{8}$	410 (500-1 $\frac{1}{8}$ )
LN AV MDA	4700-1	470 (500-1)	4700-1 $\frac{3}{8}$	470 (500-1 $\frac{3}{8}$ )
CIRCLING	4800-1 566 (600-1)	4840-1 606 (700-1)	4840-1 $\frac{3}{4}$ 606 (700-1 $\frac{3}{4}$ )	5100-2 $\frac{3}{4}$ 866 (900-2 $\frac{3}{4}$ )

SW-4, 11 JUL 2024 to 08 AUG 2024

SW-4, 11 JUL 2024 to 08 AUG 2024