

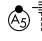
# ILS or LOC RWY 7

DENVER INTL (DEN)

LOC/DME I-DZG <b>111.55</b> Chan <b>52(Y)</b>	APP CRS <b>082°</b>	Rwy ldg <b>12000</b> TDZE <b>5352</b> Apt Elev <b>5434</b>
---	------------------------	--

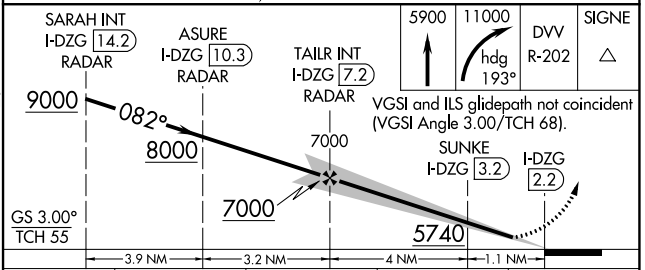
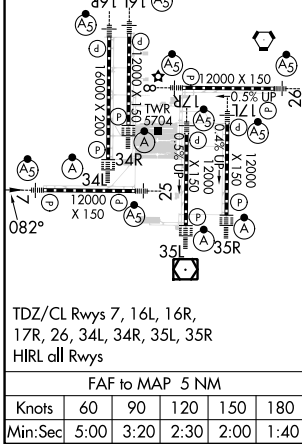
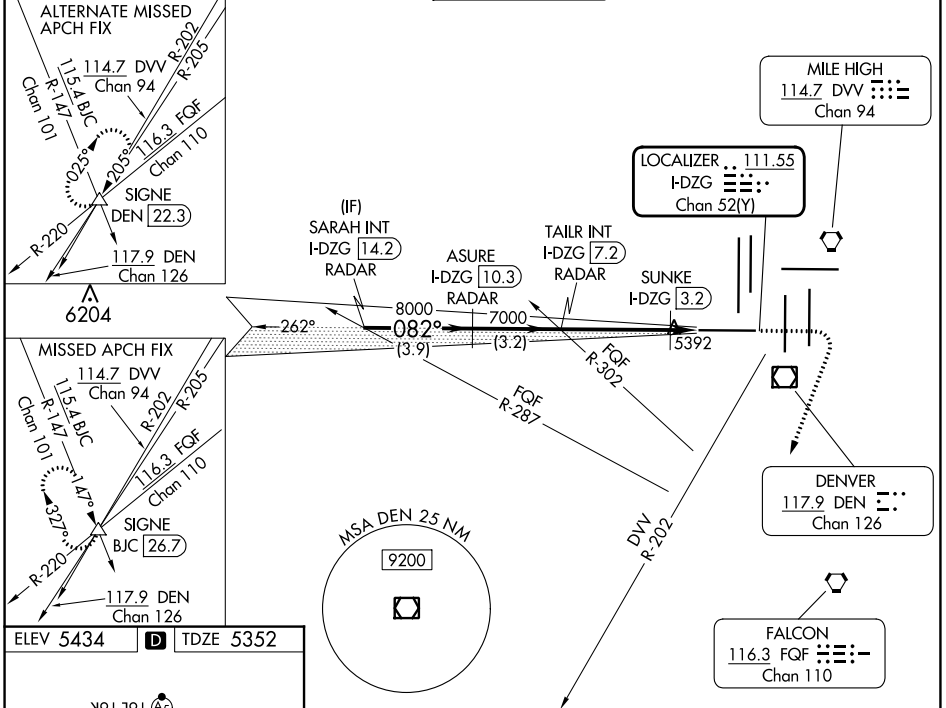
RADAR required for procedure entry.

For inop ALS, increase SUNKE fix Cat C/D visibility to RVR 4500. Simultaneous approach authorized.

MALSR 

MISSED APPROACH: Climb to 5900 then climbing right turn to 11000 on heading 193° and on DVV VORTAC R-202 to SIGNE INT/BJC 26.7 DME and hold. Continue climb-in-hold to 11000.

D-ATIS ARR <b>125.6 379.9</b> DEP <b>134.025</b>	DENVER APP CON <b>119.3 307.3</b> (NORTH) <b>120.35 379.3</b> (SOUTH)	DENVER TOWER <b>128.75 273.55</b>	GND CON <b>121.35 379.175</b>	CLNC DEL <b>118.75</b>	CPDLC
--	---	--------------------------------------	----------------------------------	---------------------------	-------



CATEGORY	A	B	C	D
S-ILS 7	5552/18 200 (200-½)			
S-LOC 7	5740/24	388 (400-½)	5740/35	388 (400-⅝)
SUNKE FIX MINIMUMS				
S-LOC 7	5660/24 308 (300-½)			

SW-1, 11 JUL 2024 to 08 AUG 2024

SW-1, 11 JUL 2024 to 08 AUG 2024