

WAAS CH <b>48818</b> <b>W15A</b>	APP CRS <b>147°</b>	Rwy Idg TDZE Apt Elev	<b>4999</b> <b>1787</b> <b>1815</b>
--	------------------------	-----------------------------	---

# RNAV (GPS) RWY 15

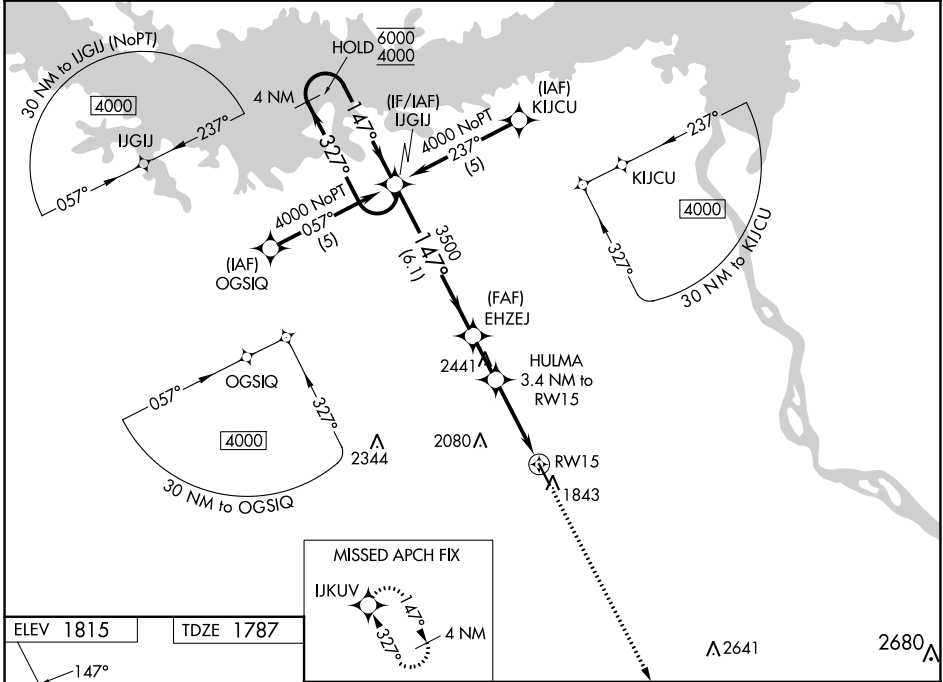
MERCER COUNTY RGNL (HZE)

RNP APCH - GPS.

**⚠** For uncompensated Baro-VNAV systems, LNAV/VNAV NA below -18°C or above 54°C.

MISSED APPROACH: Climb to 4000 direct IJKUV and hold.

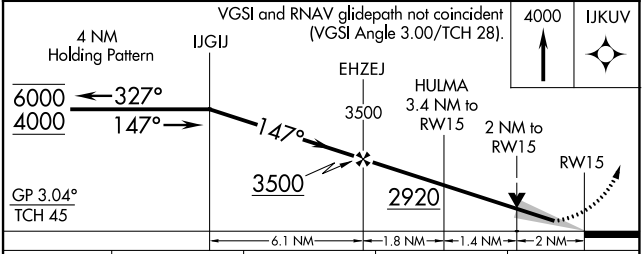
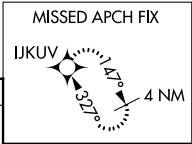
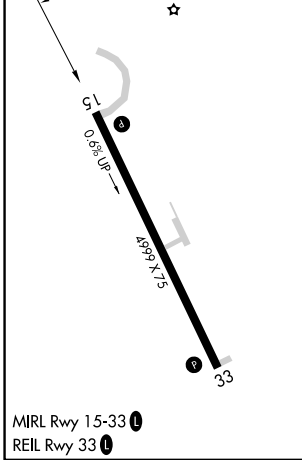
AWOS-3PT <b>118.675</b>	MINNEAPOLIS CENTER <b>124.25 236.825</b>	UNICOM <b>122.8 (CTAF) ①</b>
----------------------------	---	---------------------------------



NC-1, 11 JUL 2024 to 08 AUG 2024

NC-1, 11 JUL 2024 to 08 AUG 2024

ELEV 1815	TDZE 1787
-----------	-----------



CATEGORY	A	B	C	D
LPV DA	2165-1 378 (400-1)			NA
LNAV/VNAV DA	2231-1 $\frac{3}{8}$ 444 (500-1 $\frac{3}{8}$ )			NA
LNAV MDA	2460-1	673 (700-1)	2460-1 $\frac{7}{8}$ 673 (700-1 $\frac{7}{8}$ )	NA
<b>C</b> CIRCLING	2460-1	645 (700-1)	2480-1 $\frac{7}{8}$ 665 (700-1 $\frac{7}{8}$ )	NA