

WAAS CH <b>45834</b> <b>W09A</b>	APP CRS <b>095°</b>	Rwy Idg TDZE Apt Elev	<b>4557</b> <b>9</b> <b>9</b>
--	------------------------	-----------------------------	-------------------------------------

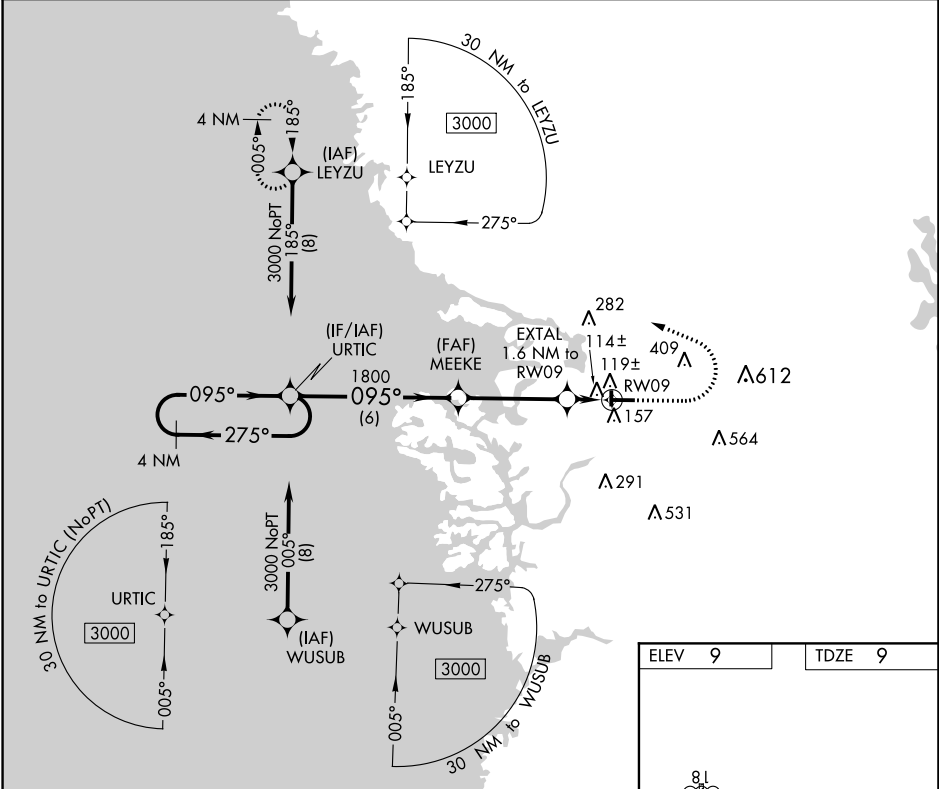
# RNAV (GPS) RWY 9

CRYSTAL RIVER-CAPT TOM DAVIS FLD (CGC)

**▼** Procedure NA at night. DME/DME RNP-0.3 NA. When local altimeter setting not received, use Ocala altimeter setting and increase all MDA 80 feet; increase LP Cat C/D visibility  $\frac{3}{8}$  mile, LNAV Cat C/D visibility  $\frac{1}{4}$  mile and Circling Cat C/D visibility  $\frac{1}{4}$  mile. Helicopter visibility reduction below 1 SM NA.

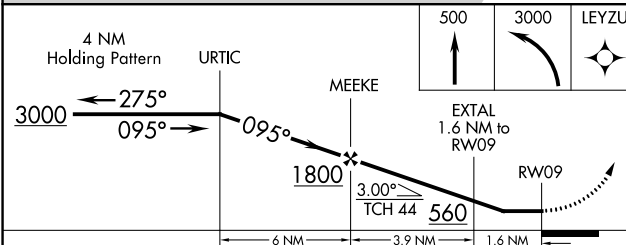
**MISSED APPROACH:** Climb to 500 then climbing left turn to 3000 direct LEYZU and hold.

AWOS-3 <b>118.325</b>	JACKSONVILLE APP CON <b>118.6 251-15</b>	UNICOM <b>122.725 (CTAF) 0</b>
--------------------------	---	-----------------------------------

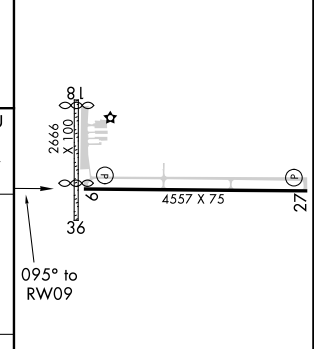


SE-3, 11 JUL 2024 to 08 AUG 2024

SE-3, 11 JUL 2024 to 08 AUG 2024



ELEV 9	TDZE 9
--------	--------



CATEGORY	A	B	C	D
LP MDA	380-1		371 (400-1)	
LNAV MDA	420-1	411 (500-1)	420-1 $\frac{1}{8}$	411 (500-1 $\frac{1}{8}$ )
<b>C</b> CIRCLING	460-1 451 (500-1)	540-1 531 (600-1)	760-2 $\frac{1}{4}$ 751 (800-2 $\frac{1}{4}$ )	880-2 $\frac{3}{4}$ 871 (900-2 $\frac{3}{4}$ )

MIRL Rwy 9-27 **0**  
REIL Rlys 9 and 27 **0**