

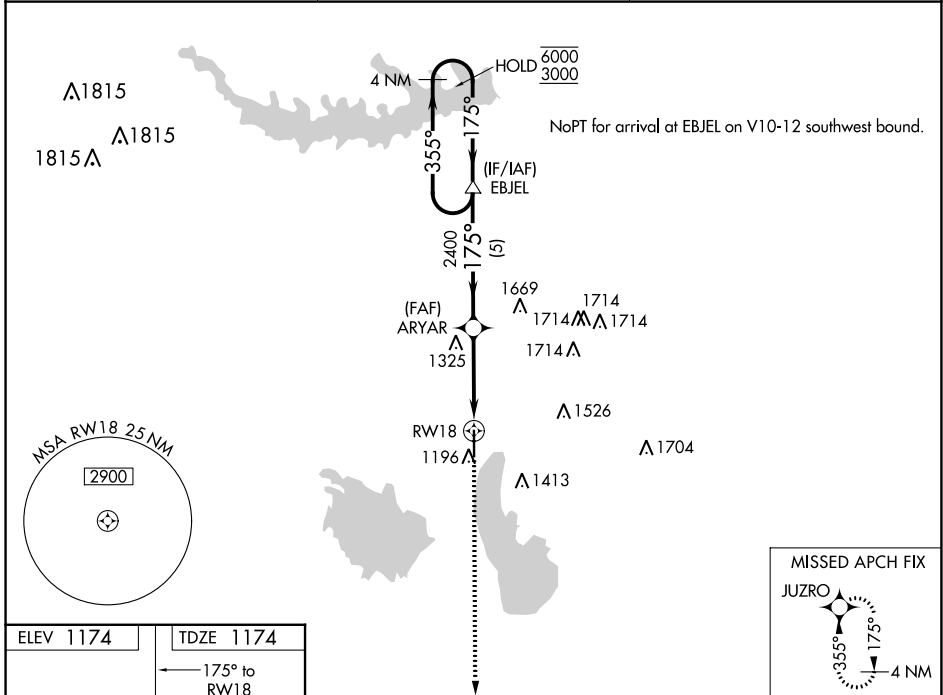
WAAS CH 66021 W18A	APP CRS 175°	Rwy Idg 5500 TDZE 1174 Apt Elev 1174
--	------------------------	---

RNAV (GPS) RWY 18

COFFEY COUNTY (UKL)

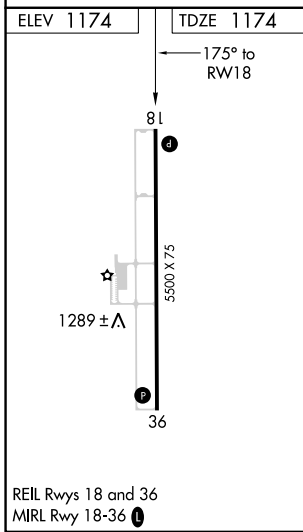
RNP APCH-GPS.	MISSED APPROACH: Climb to 3000 direct JUZRO and hold.
For uncompensated Baro-VNAV systems, LNAV/VNAV NA below -17°C or above 54°C.	

AWOS-3PT 121.125	KANSAS CITY CENTER 127.725 270.25	UNICOM 123.0 (CTAF) 0
----------------------------	---	---------------------------------



NC-2, 11 JUL 2024 to 08 AUG 2024

NC-2, 11 JUL 2024 to 08 AUG 2024



ELEV 1174	TDZE 1174	175° to RWY 18	
8.1	5500 X 75	1289 ± Δ	36
4 NM Holding Pattern	EBJEL	ARYAR	JUZRO
6000 ← 355°	3000 → 175°	2400 → 175°	3000
GP 3.00°	TCH 40	2400	1.2 NM to RWY 18
		5 NM	2.5 NM
			1.2 NM
REIL Rwy 18 and 36	MIRL Rwy 18-36		

CATEGORY	A	B	C	D
LPV DA	1424-1	250 (300-1)		NA
LNAV/VNAV DA	1424-1	250 (300-1)		NA
LNAV MDA	1580-1	406 (500-1)	1580-1 1/8 406 (500-1 1/8)	NA
C CIRCLING	1580-1 406 (500-1)	1640-1 466 (500-1)	1920-2 1/4 746 (800-2 1/4)	NA