

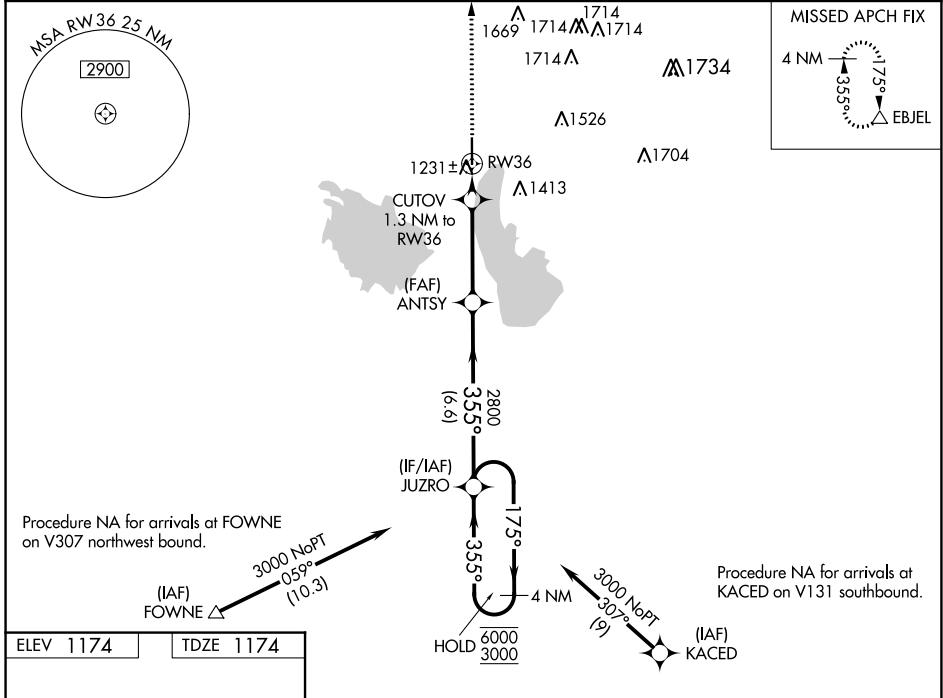
WAAS CH <b>40222</b> <b>W36A</b>	APP CRS <b>355°</b>	Rwy Idg THRE <b>1174</b> Apt Elev <b>1174</b>
--	------------------------	---

# RNAV (GPS) RWY 36

COFFEY COUNTY (UKL)

RNP APCH-GPS. ▼ For uncompensated Baro-VNAV systems, LNAV/VNAV NA below -17°C or above 54°C.	MISSED APPROACH: Climb to 3000 direct EBJEL and hold.
---	---

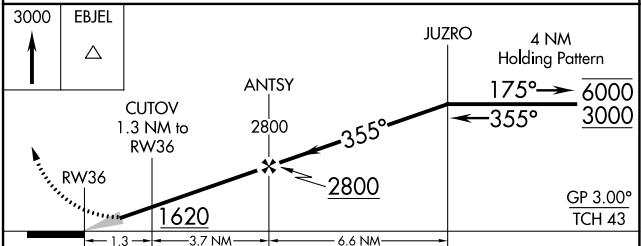
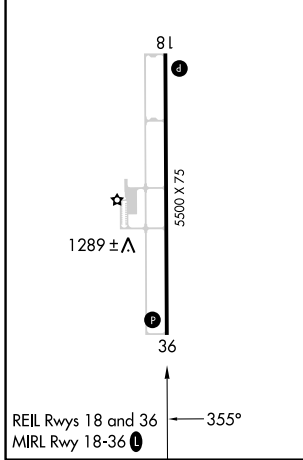
AWOS-3PT <b>121.125</b>	KANSAS CITY CENTER <b>127.725 270.25</b>	UNICOM <b>123.0 (CTAF) 0</b>
----------------------------	---	---------------------------------



NC-2, 11 JUL 2024 to 08 AUG 2024

NC-2, 11 JUL 2024 to 08 AUG 2024

ELEV 1174	TDZE 1174
-----------	-----------



CATEGORY	A	B	C	D
LPV DA	1424-1	250 (300-1)		NA
LNAV/VNAV DA	1424-1	250 (300-1)		NA
LNAV MDA	1500-1	326 (400-1)		NA
<b>C</b> CIRCLING	1580-1 406 (500-1)	1640-1 466 (500-1)	1920-2¼ 746 (800-2¼)	NA